

List of pages in this Trip Kit

Trip Kit Index

Airport Information For OSDI

Terminal Charts For OSDI

Revision Letter For Cycle 18-2019

Change Notices

Notebook

General Information

Location: DAMASCUS SYR
ICAO/IATA: OSDI / DAM
Lat/Long: N33° 24.6', E036° 30.8'
Elevation: 2020 ft

Airport Use: Public
Daylight Savings: Observed
UTC Conversion: -2:00 = UTC
Magnetic Variation: 3.0° E

Fuel Types: Jet A-1
Repair Types: Minor Airframe, Minor Engine
Customs: Yes
Airport Type: IFR
Landing Fee: Yes
Control Tower: Yes
Jet Start Unit: No
LLWS Alert: No
Beacon: Yes

Sunrise: 0334 Z
Sunset: 1508 Z

Runway Information

Runway: 05R
Length x Width: 11811 ft x 148 ft
Surface Type: concrete
TDZ-Elev: 2020 ft
Lighting: Edge, ALS, Centerline, TDZ
Stopway: 197 ft

Runway: 23R
Length x Width: 11811 ft x 148 ft
Surface Type: concrete
TDZ-Elev: 1995 ft
Lighting: Edge, ALS, Centerline, TDZ
Stopway: 197 ft

Runway: 05L
Length x Width: 11811 ft x 148 ft
Surface Type: concrete
TDZ-Elev: 2002 ft
Lighting: Edge, ALS, Centerline
Stopway: 197 ft

Runway: 23L
Length x Width: 11811 ft x 148 ft

Surface Type: concrete

TDZ-Elev: 2002 ft

Lighting: Edge, ALS, Centerline, TDZ

Stopway: 197 ft

Communication Information

Damascus Tower: 121.900

Damascus Tower: 118.500

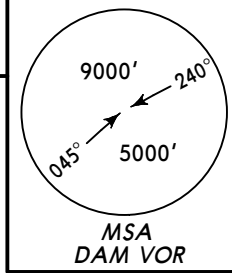
Damascus Ground: 121.900

OSDI/DAM
DAMASCUS INTL

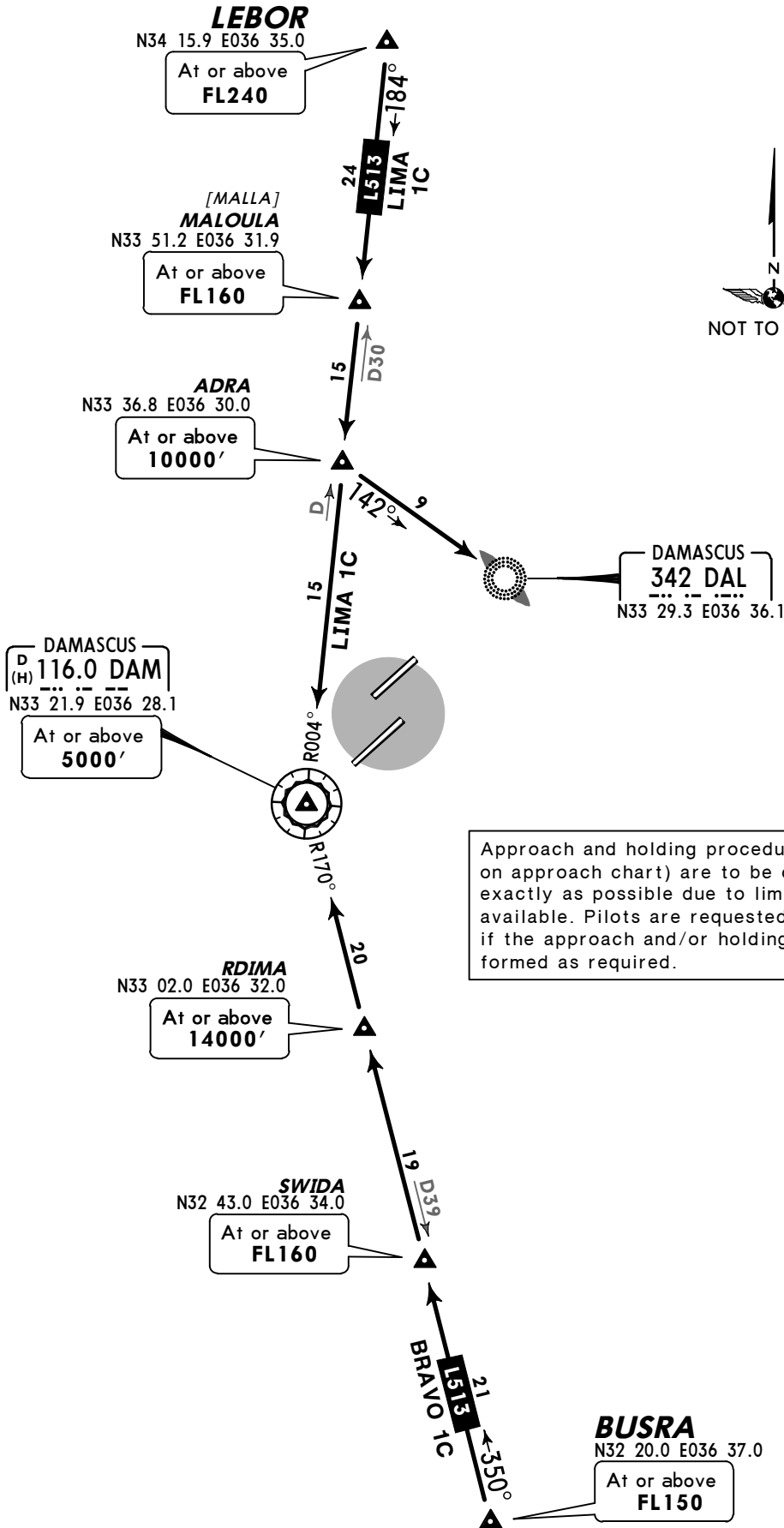
JEPPESEN
24 FEB 12 10-2

DAMASCUS, SYRIA
STAR

ATIS 128.225 Apt Elev 2020' Alt Set: hPa Trans level: FL150 Trans alt: 13000'



BRAVO 1C [BRAVIC], LIMA 1C
RWYS 05L/R, 23L/R ARRIVALS



Approach and holding procedures (as depicted on approach chart) are to be carried out as exactly as possible due to limited airspace available. Pilots are requested to inform ATC if the approach and/or holding cannot be performed as required.

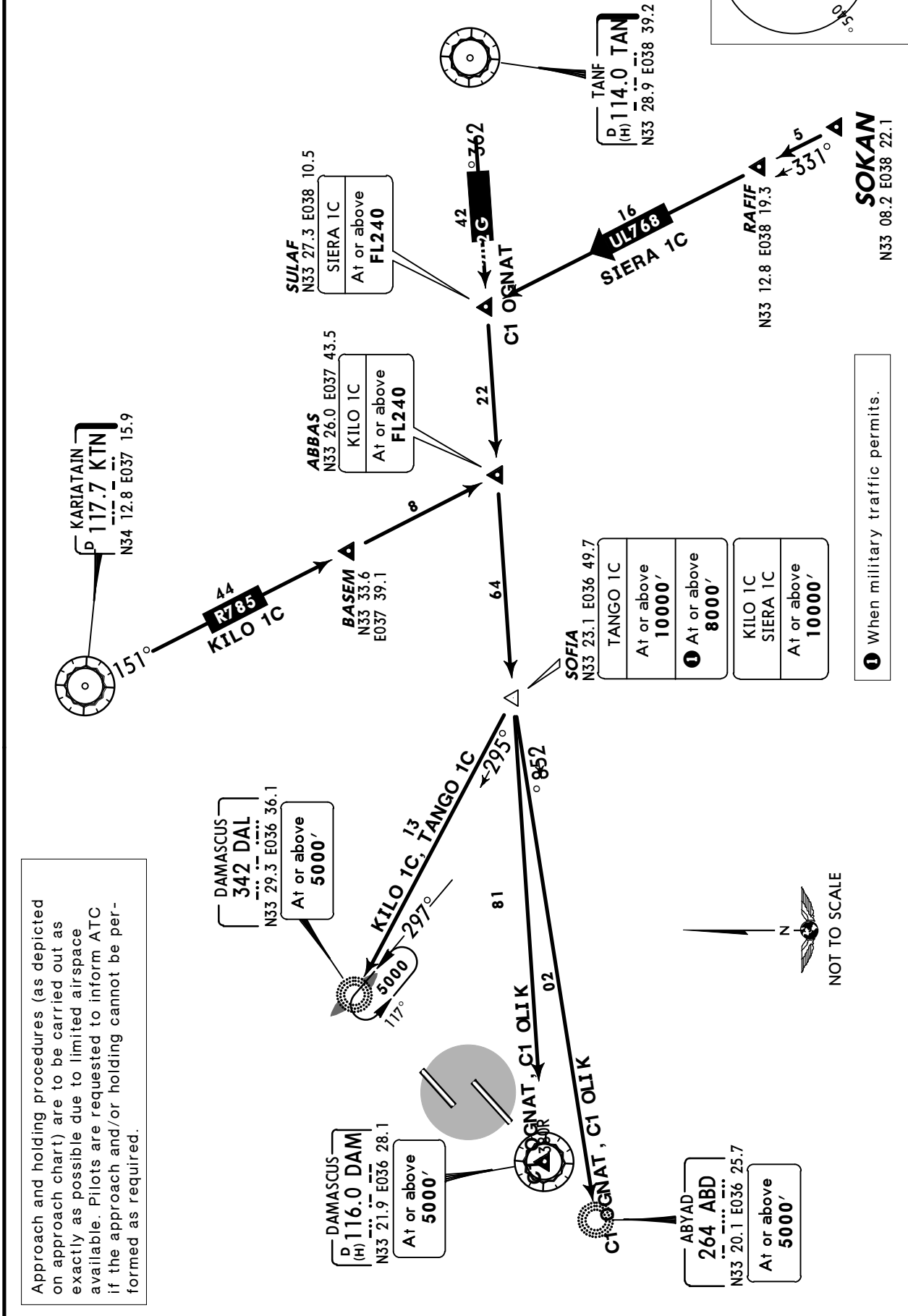
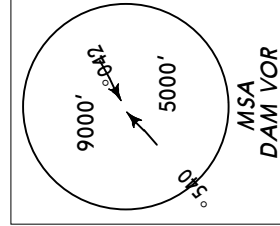
OSDI/DAM
DAMASCUS INTL

JEPPESEN
24 FEB 12 10-2A

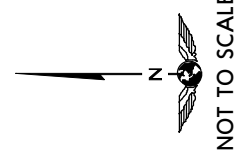
DAMASCUS, SYRIA
STAR

ATIS 128.225	Apt Elev 2020'	Alt Set: hPa	Trans level: FL150	Trans alt: 13000'
-----------------	-------------------	--------------	--------------------	-------------------

KILO 1C
SIERA 1C [SIER1C], TANGO 1C [TANG1C]
RWYS 05L/R, 23L/R ARRIVALS



Approach and holding procedures (as depicted on approach chart) are to be carried out as exactly as possible due to limited airspace available. Pilots are requested to inform ATC if the approach and/or holding cannot be performed as required.



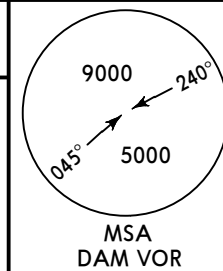
OSDI/DAM
DAMASCUS INTL

JEPPESEN
5 JUL 19 10-3

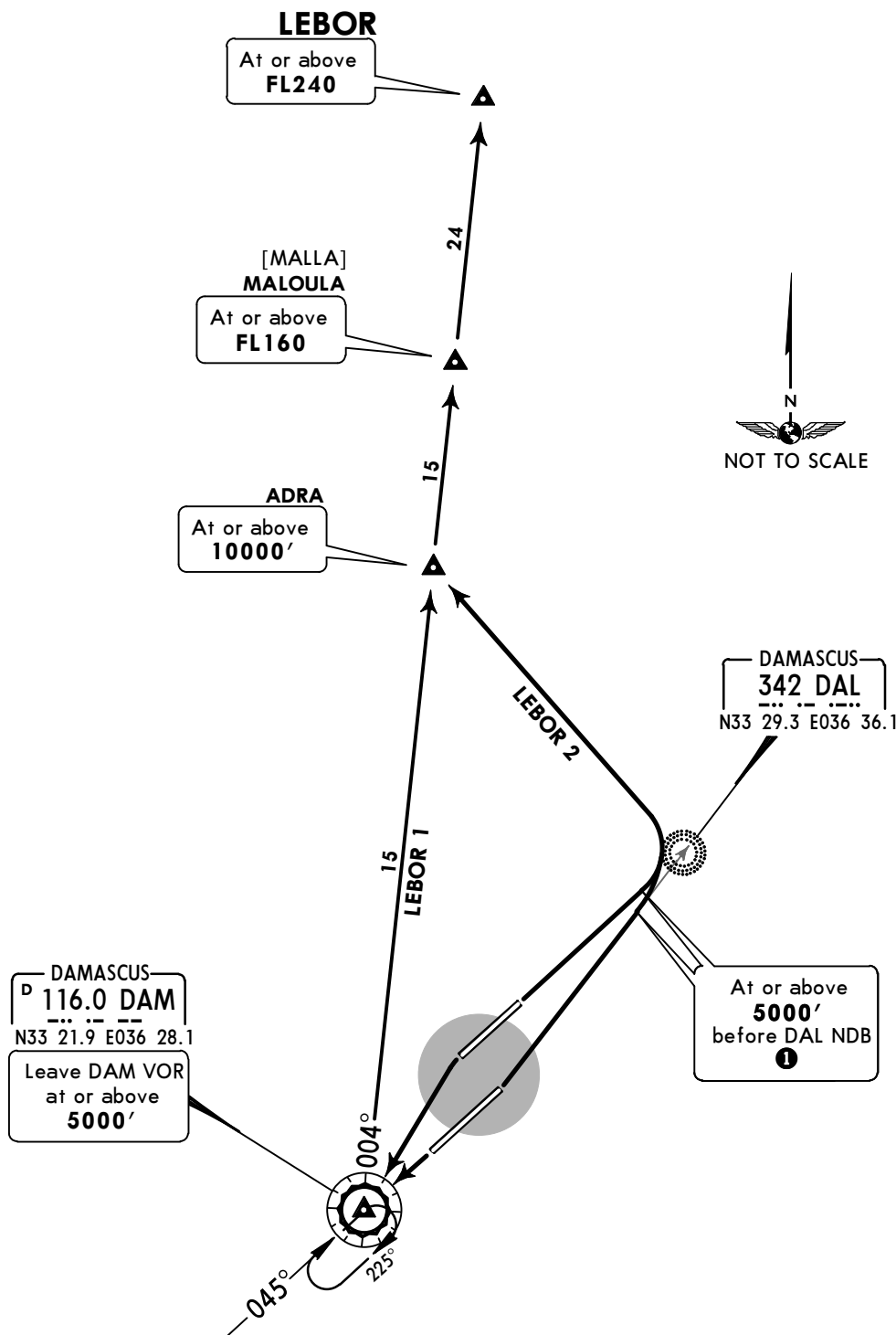
DAMASCUS, SYRIA
SID

Apt Elev
2020'

Trans level: FL150 Trans alt: 13000'



LEBOR 1 (LEB 1), LEBOR 2 (LEB 2)
DEPARTURES



SID	RWY	ROUTING
LEBOR 1	23L/R	To DAM VOR, climb in holding pattern to 5000' or above, turn RIGHT, DAM R-004 via ADRA and MALOULA to LEBOR.
LEBOR 2	05L/R	Towards DAL NDB, at or above 5000' before DAL NDB ①, turn LEFT to ADRA, then via MALOULA to LEBOR.

① If unable to reach 5000' or above before DAL NDB, proceed to DAL NDB, turn RIGHT to DAL NDB to leave DAL NDB at or above 5000' to ADRA.

OSDI/DAM
DAMASCUS INTL

JEPPESSEN
5 JUL 19 10-3A

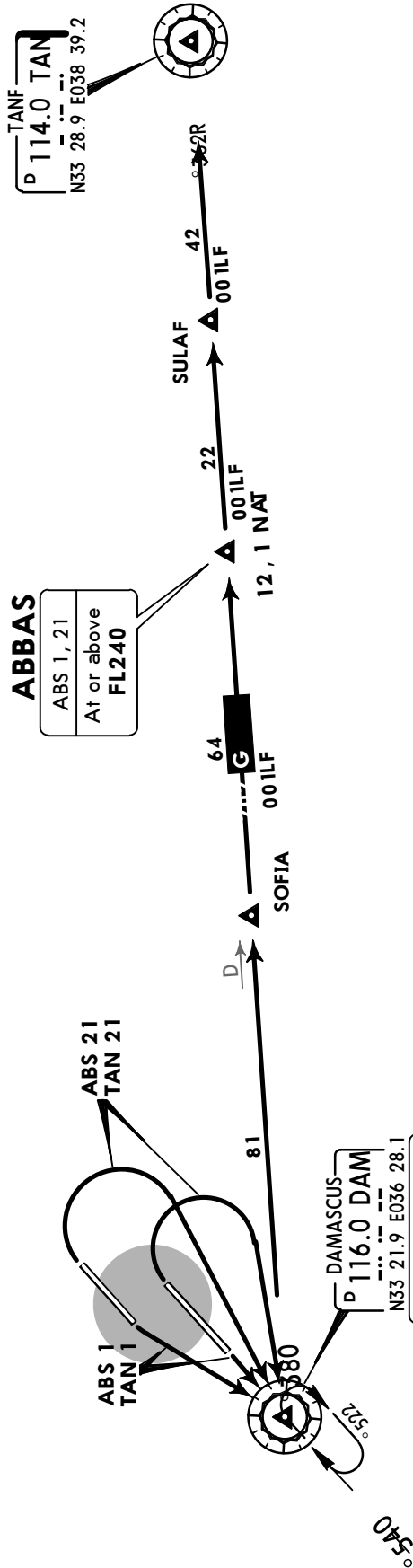
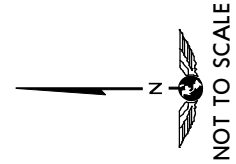
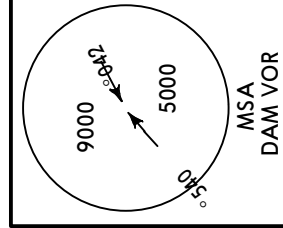
DAMASCUS, SYRIA

SID

Apt Elev
2020'

Trans level: FL150 Trans alt: 13000'
RWY 05L/R: Do not turn RIGHT before DER.

ABBAS 1 (ABS 1), ABBAS 21 (ABS 21)
TANF 1 (TAN 1), TANF 21 (TAN 21)
DEPARTURES



ROUTING	
SID	RWY
ABS 1	23L/R
ABS 21	05L/R
TAN 1	23L/R
TAN 21	05L/R

To DAM VOR, climb in holding pattern to 8000' or above, then via G-202 to ABBAS.
Turn RIGHT to DAM VOR, climb in holding pattern to 8000' or above, then to ABBAS.
To DAM VOR, climb in holding pattern to 8000' or above, intercept DAM R-083 to TAN VOR.
Turn RIGHT to DAM VOR, climb in holding pattern to 8000' or above, intercept DAM R-083 to TAN VOR.

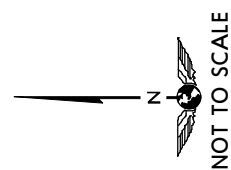
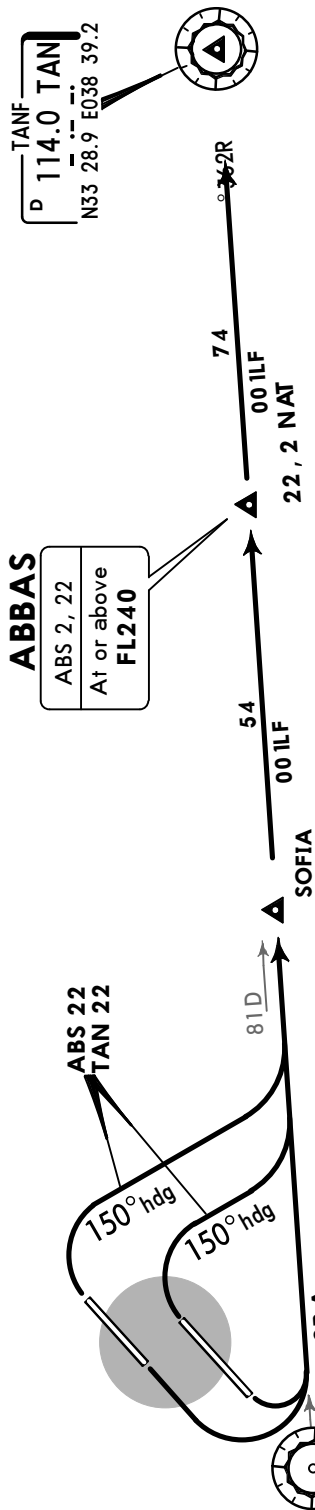
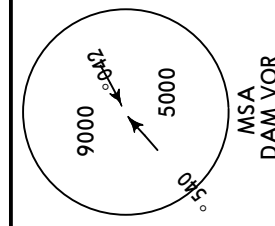
OSDI/DAM
DAMASCUS INTL

JEPPESEN
5 JUL 19 10-3B

DAMASCUS, SYRIA
SID

Apt Elev 2020'
Trans level: FL150 Trans alt: 13000'
RWY 05L/R: Do not turn RIGHT before DER.

ABBAS 2 (ABS 2), ABBAS 22 (ABS 22)
TANF 2 (TAN 2), TANF 22 (TAN 22)
DEPARTURES



SID	RWY	ROUTING
ABS 2 ①	23L/R	Turn LEFT, intercept DAM R-083 to ABBAS.
ABS 22 ①	05L/R	Turn RIGHT, 150° heading, intercept DAM R-083 to ABBAS.
TAN 2 ①	23L/R	Turn LEFT, intercept DAM R-083 to TAN VOR.
TAN 22	05L/R	Turn RIGHT, 150° heading, intercept DAM R-083 to TAN VOR.

① Applicable when no altitude restrictions imposed.

OSDI/DAM
DAMASCUS INTL

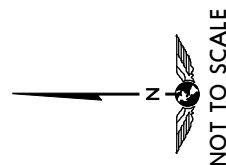
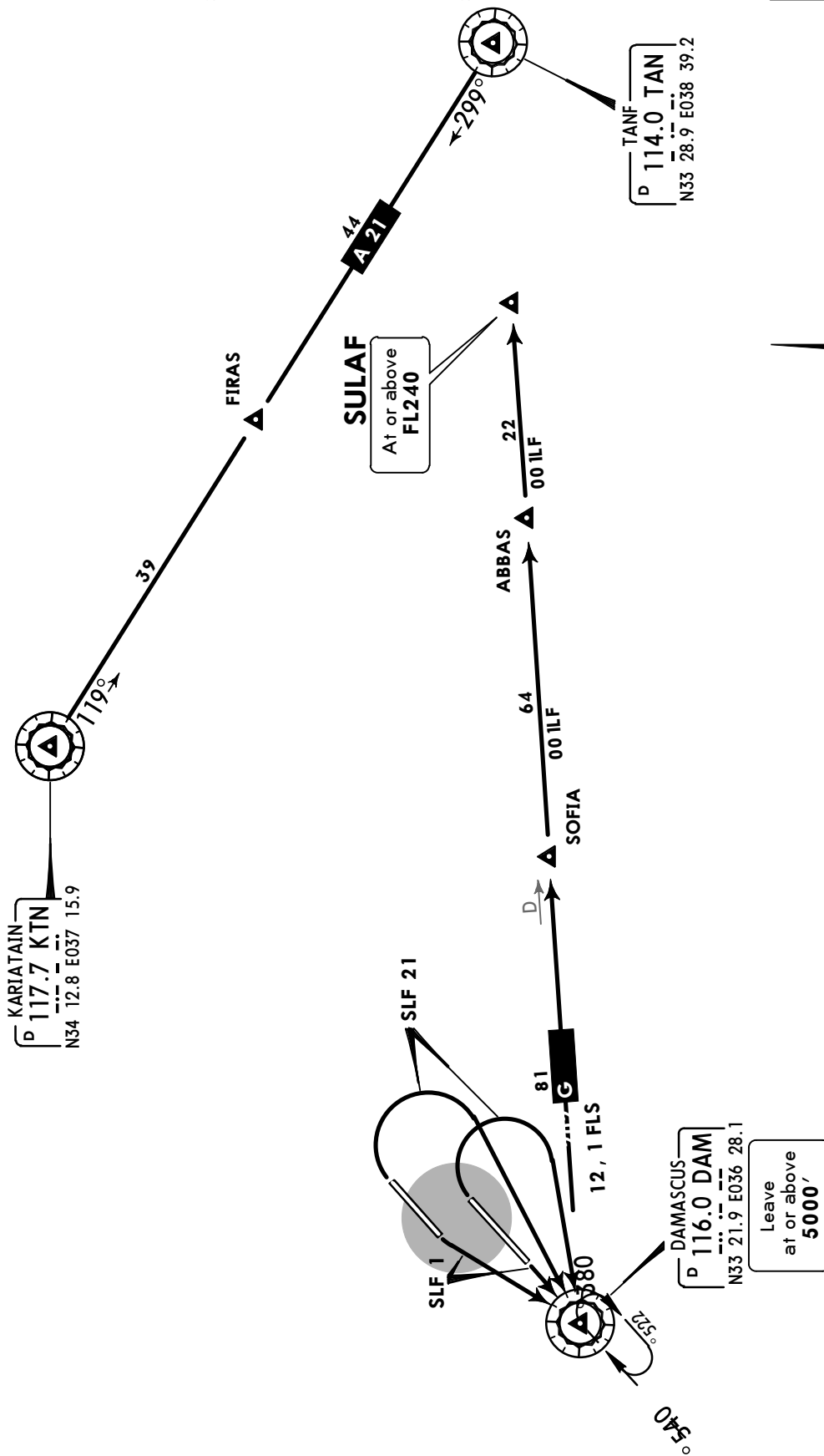
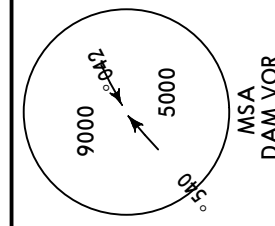
JEPPESSEN
5 JUL 19 10-3C

DAMASCUS, SYRIA
SID

Apt Elev
2020'

Trans level: FL150 Trans alt: 13000'
RWY 05L/R: Do not turn RIGHT before DER.

**SULAF 1 (SLF 1), SULAF 21 (SLF 21)
DEPARTURES**
VIA HOLDING OVER DAM VOR
APPLICABLE WHEN NO ALTITUDE RESTRICTIONS IMPOSED
OTHERWISE PROCEED VIA AIRWAY A 21



SID	RWY	ROUTING
SLF 1	23L/R	To DAM VOR, climb in holding pattern to 5000' or above, then via airway G-202 to SULAF.
SLF 21	05L/R	Turn RIGHT to DAM VOR, climb in holding pattern to 5000' or above, then via airway G-202 to SULAF.

OSDI/DAM
DAMASCUS INTL

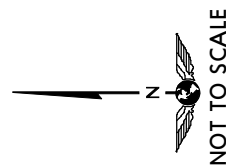
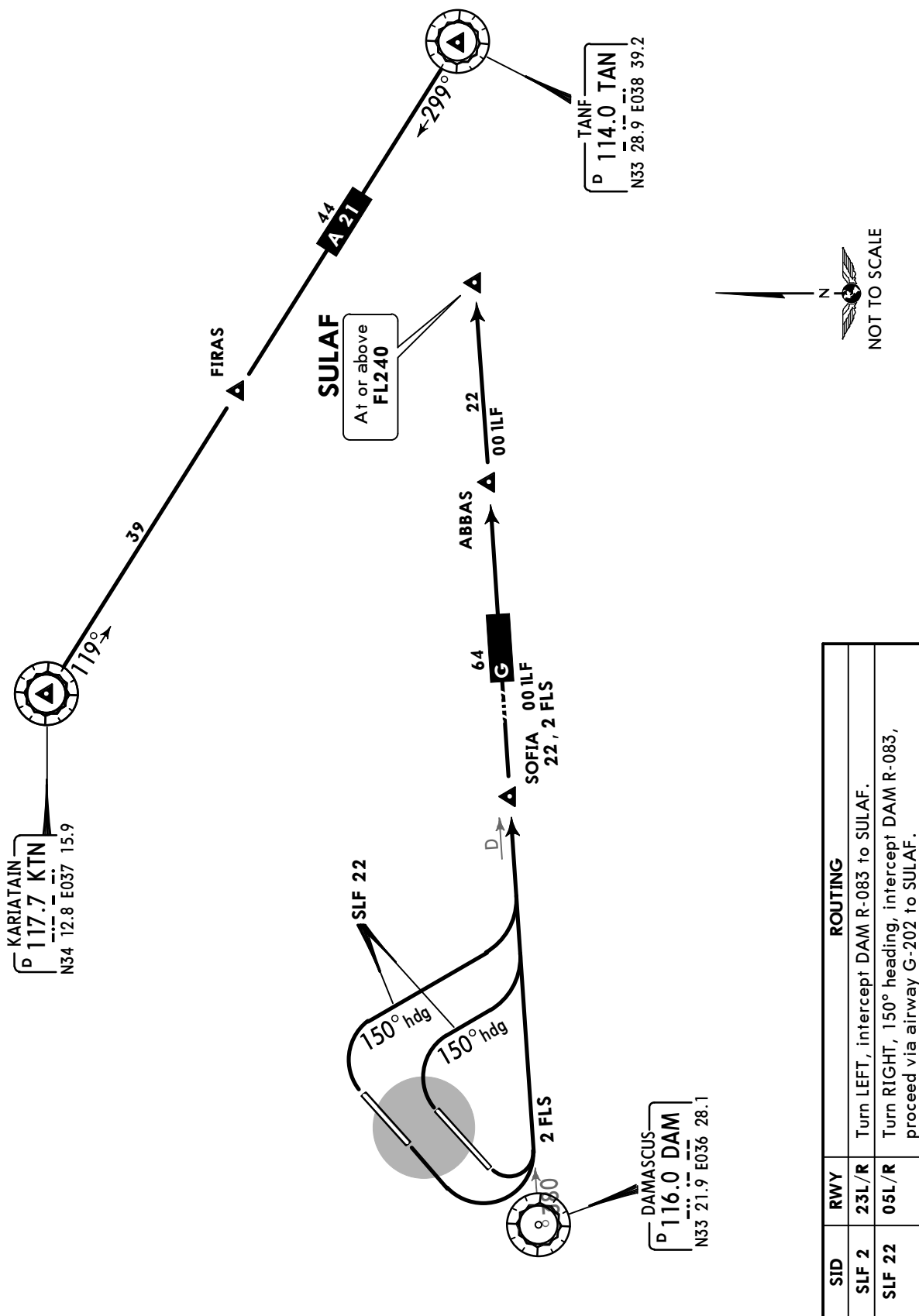
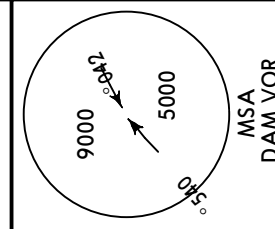
JEPPESEN
5 JUL 19 10-3D

DAMASCUS, SYRIA
SID

Apt Elev
2020'

Trans level: FL150 Trans alt: 13000'
RWY 05L/R: Do not turn RIGHT before DER.

SULAF 2 (SLF 2), SULAF 22 (SLF 22)
DEPARTURES
WITHOUT HOLDING
APPLICABLE WHEN NO ALTITUDE RESTRICTIONS IMPOSED
OTHERWISE PROCEED VIA AIRWAY A 21



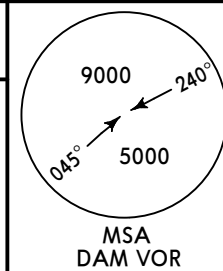
OSDI/DAM
DAMASCUS INTL

JEPPESEN
 5 JUL 19 **10-3E**

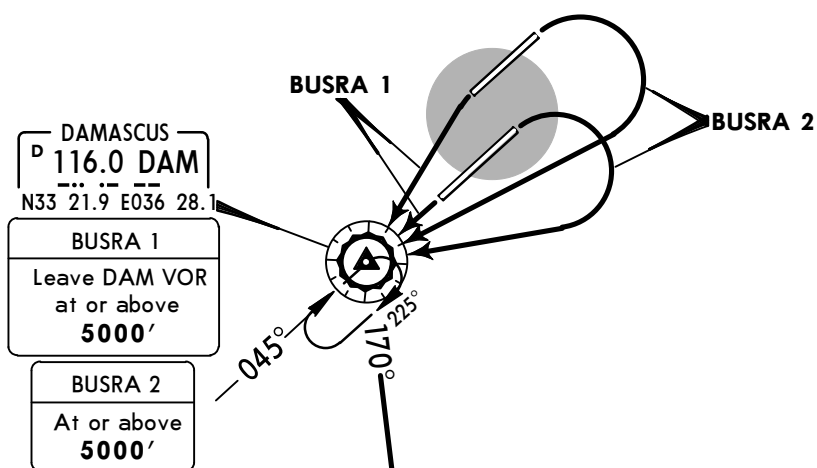
DAMASCUS, SYRIA
SID

Apt Elev
2020'

Trans level: FL150 Trans alt: 13000'
 RWY 05L/R: Do not turn RIGHT before DER.



BUSRA 1 (BUS 1), BUSRA 2 (BUS 2)
DEPARTURES



RDIMA
 At or above
10000'

SWIDA
 At or above
FL160



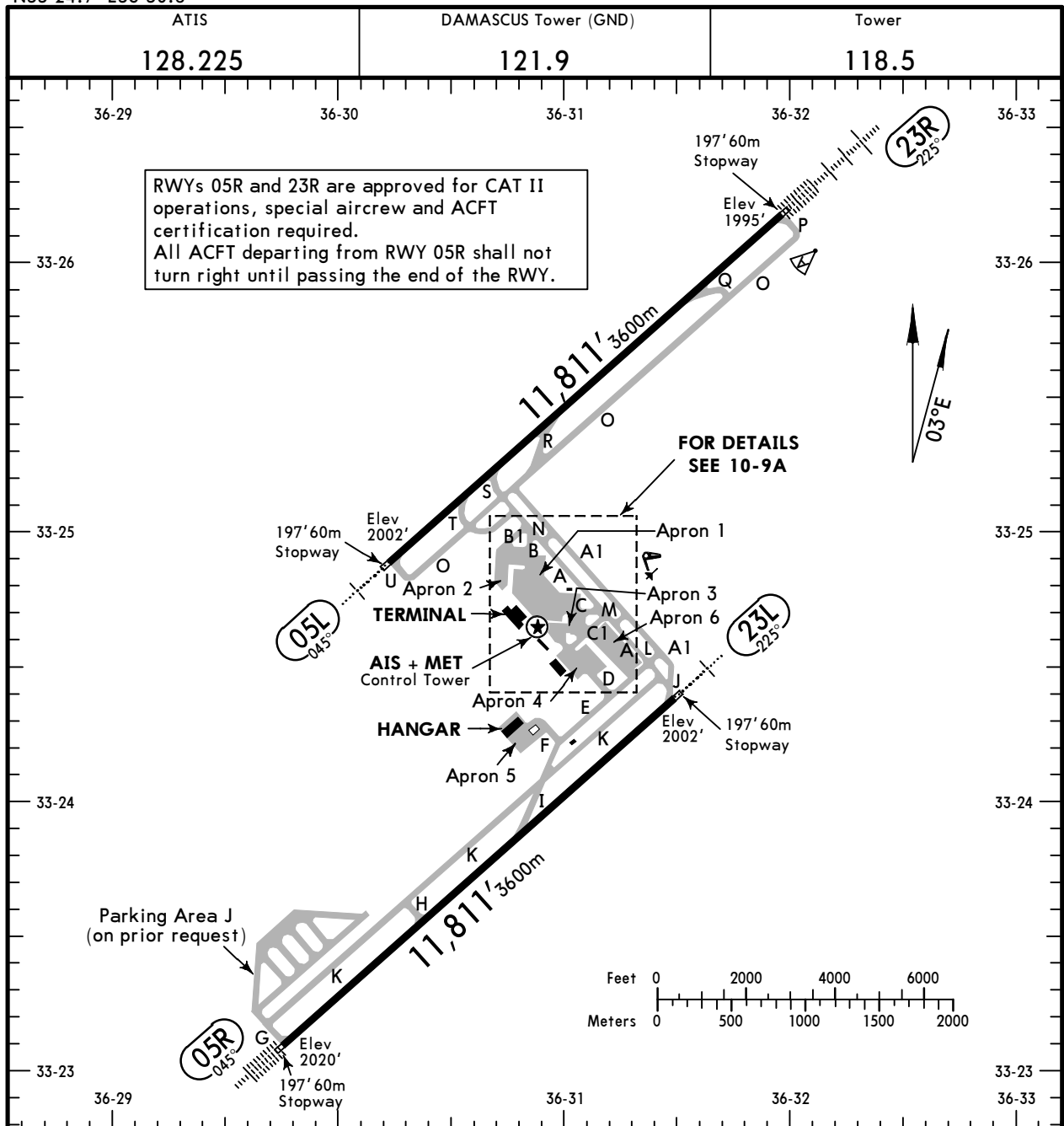
BUSRA

SID	RWY	ROUTING
BUSRA 1	23L/R	To DAM VOR, climb in holding pattern to 5000' or above, DAM R-170 via RDIMA and SWIDA to BUSRA.
BUSRA 2	05L/R	Turn RIGHT to DAM VOR, DAM R-170 via RDIMA and SWIDA to BUSRA.

OSDI/DAM
 Apt Elev **2020'**
 N33 24.7 E36 30.8

JEPPesen
 28 JUN 19 **(10-9)**

DAMASCUS, SYRIA
DAMASCUS INTL



ADDITIONAL RUNWAY INFORMATION

RWY	HIRL CL ALS PAPI	RVR	USABLE LENGTHS		
			Threshold	Glide Slope	TAKE-OFF
05L	HIRL CL ALS PAPI	RVR			
23R	HIRL CL HIALS-II TDZ PAPI-L (3.0°)	RVR		10,778' 3285m	
05R	HIRL CL HIALS-II TDZ PAPI-L (3.0°)	RVR		10,778' 3285m	
23L	HIRL CL HIALS TDZ PAPI-L (3.0°)	RVR			148' 45m

TAKE-OFF

AIR CARRIER (JAA)
All Rwys

LVP must be in force

	RL & CL	RCLM (DAY only) or RL	RCLM (DAY only) or RL
A			
B	200m	250m	400m
C			
D	250m	300m	

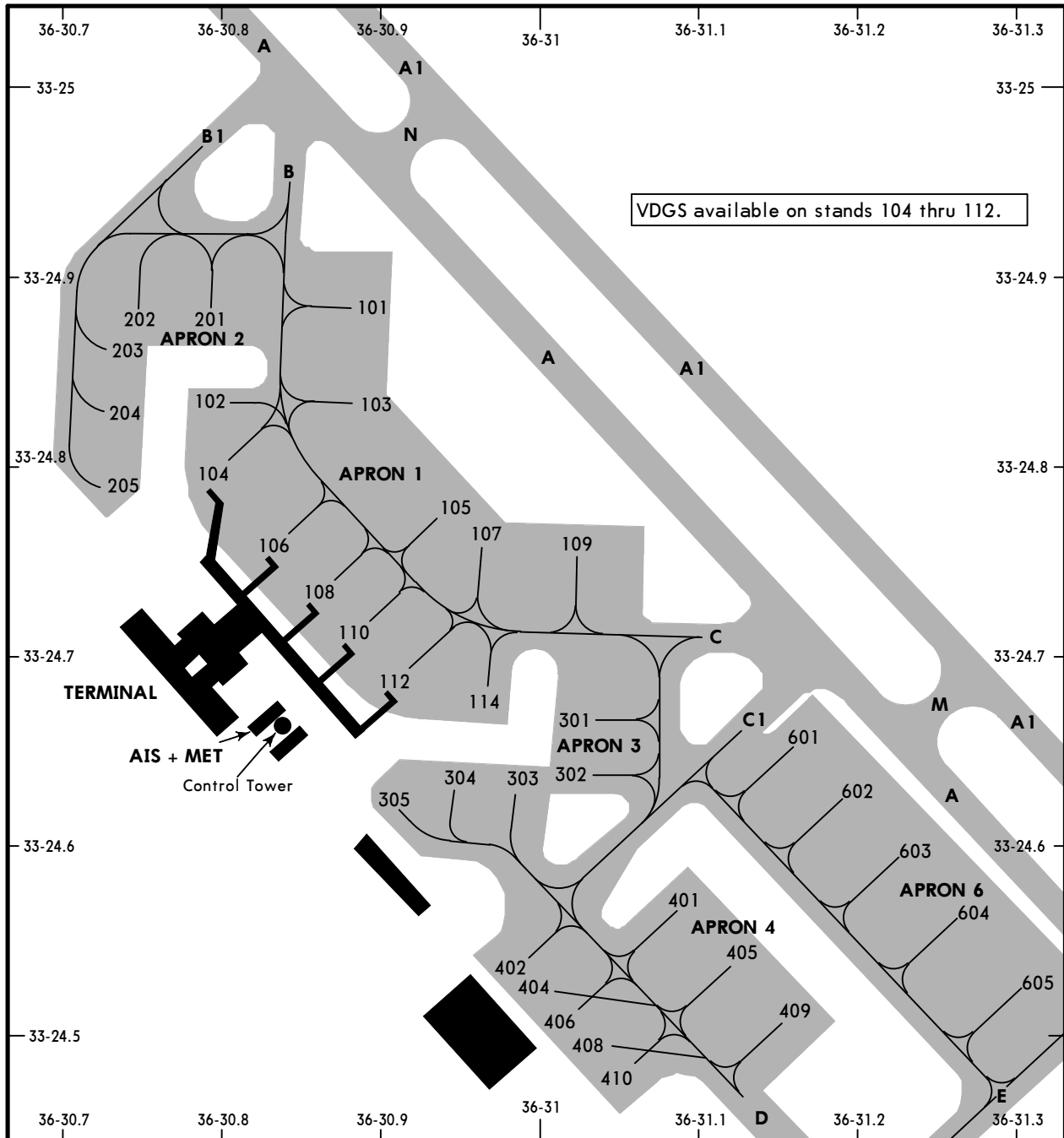
OSDI/DAM



DAMASCUS, SYRIA

28 JUN 19 (10-9A)

DAMASCUS INTL

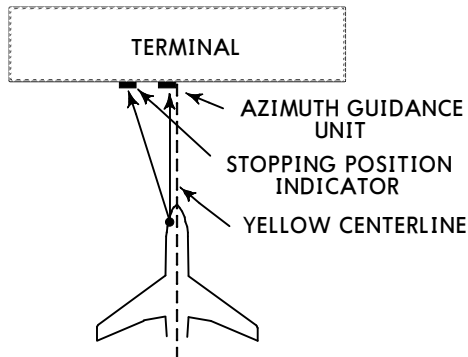


INS COORDINATES

STAND No.	COORDINATES	STAND No.	COORDINATES
101	N33 24.9 E036 30.9	302, 303	N33 24.6 E036 31.0
102	N33 24.8 E036 30.8	304, 305	N33 24.6 E036 30.9
103	N33 24.8 E036 30.9	401	N33 24.6 E036 31.2
104	N33 24.8 E036 30.8	402	N33 24.6 E036 31.3
105	N33 24.8 E036 30.9	404	N33 24.5 E036 31.0
106	N33 24.7 E036 30.8	405	N33 24.5 E036 31.1
107	N33 24.7 E036 31.0	406, 408	N33 24.5 E036 31.0
108	N33 24.7 E036 30.9	409	N33 24.5 E036 31.2
109	N33 24.7 E036 31.0	410	N33 24.5 E036 31.0
110, 112	N33 24.7 E036 30.9	601, 602	N33 24.6 E036 31.2
114	N33 24.7 E036 31.0	603, 604	N33 24.6 E036 31.3
201	N33 24.9 E036 30.8	605	N33 24.5 E036 31.3
202, 203	N33 24.9 E036 30.7		
204, 205	N33 24.8 E036 30.7		
301	N33 24.7 E036 31.0		

CHANGES: Grid added. Note. Stands 403 and 407 removed.

VISUAL DOCKING GUIDANCE SYSTEM



GENERAL

The visual docking guidance system for nose-in parking positions consists of the following elements:

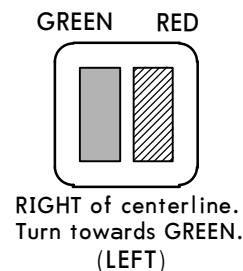
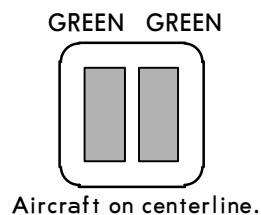
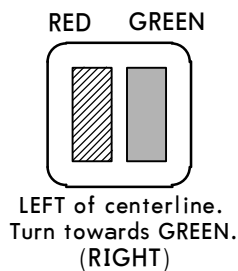
1. AZIMUTH GUIDANCE UNIT
2. YELLOW CENTERLINE
3. STOPPING POSITION INDICATOR
4. STOP SHORT SIGNS

CAUTION

The system is aligned with the LEFT hand pilot's seat only. In case of system failure, nose-in positioning will be guided by marshaller.

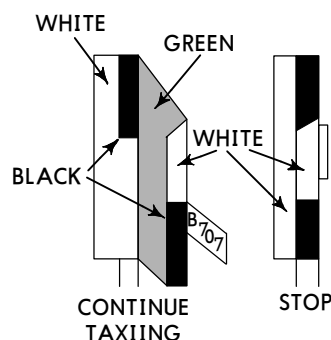
1. AZIMUTH GUIDANCE UNIT (AGNIS)

Approach the parking position along the yellow centerline so that both vertical slots of the Azimuth Guidance Unit show GREEN. Adjustments to the left or right are always to be made towards the GREEN.



2. STOPPING POSITION INDICATOR

The aircraft is stopped at the correct position by means of a Side Marker Board. As the aircraft moves along the centerline towards the airbridge, the pilot will perceive the GREEN side of the slats. Each slat bears a name tab at the appropriate pilot eye-level to indicate the aircraft type(s) to which the slat applies. When he reaches the correct STOP position he will see the black edge only, when he has passed the correct STOP position the red side of the slat will begin to come into view.



3. STOP SHORT SIGNS

They are displayed manually in case of unserviceability of loading bridge.

OSDI/DAM



19 JUL 19

10-9S

Standard

DAMASCUS, SYRIA DAMASCUS INTL

STRAIGHT-IN RWY		A	B	C	D
05L	① VOR	2500' (498') R2100m	2500' (498') R2100m	2500' (498') R2100m	2500' (498') R2100m
	ALS out	R2300m	R2300m	R2300m	R2300m
	VOR	2500' (498') R2300m	2500' (498') R2300m	2500' (498') R2500m	2500' (498') R2500m
	ALS out	R2500m	R2500m	R2700m	R2700m
05R	CAT 2 ILS	2120' (100') RA 102' R300m	2120' (100') RA 102' R300m	2120' (100') RA 102' R300m	2120' (100') RA 102' R300m
	ILS FULL	2220' (200') R750m	2220' (200') R750m	2220' (200') R750m	2231' (211') R800m
	ALS out	R1200m	R1200m	R1200m	R1200m
	① LOC	2310' (290') R900m	2310' (290') R900m	2310' (290') R900m	2310' (290') R900m
	ALS out	R1400m	R1400m	R1400m	R1400m
	LOC	2310' (290') R1100m	2310' (290') R1100m	2310' (290') R1300m	2310' (290') R1300m
	ALS out	R1600m	R1600m	R1800m	R1800m
	① VOR DME	2400' (380') R1300m	2400' (380') R1300m	2400' (380') R1300m	2400' (380') R1300m
	ALS out	R1500m	R1500m	R1700m	R1700m
	VOR DME or NDB VOR	2400' (380') R1500m	2400' (380') R1500m	2400' (380') R1700m	2400' (380') R1700m
	ALS out	R1900m	R1900m	R2100m	R2100m
	① NDB	2700' (680') R2700m	2700' (680') R2700m	2700' (680') R2700m	2700' (680') R2700m
	ALS out	R3100m	R3100m	R3100m	R3100m
	NDB	2700' (680') R2900m	2700' (680') R2900m	2700' (680') R3100m	2700' (680') R3100m
	ALS out	R3300m	R3300m	R3500m	R3500m
	23L	① VOR DME	2500' (498') R1800m	2500' (498') R1800m	2500' (498') R1800m
ALS out		R2300m	R2300m	R2300m	R2300m
VOR DME		2500' (498') R2000m	2500' (498') R2000m	2500' (498') R2200m	2500' (498') R2200m
ALS out		R2500m	R2500m	R2700m	R2700m
① VOR		2700' (698') R2800m	2700' (698') R2800m	2700' (698') R2800m	2700' (698') R2800m
ALS out		R3200m	R3200m	R3200m	R3200m
VOR		2700' (698') R3000m	2700' (698') R3000m	2700' (698') R3200m	2700' (698') R3200m
ALS out		R3400m	R3400m	R3600m	R3600m
① NDB DME		2700' (698') R1500m	2700' (698') R1500m	2700' (698') R2400m	2700' (698') R2400m
NDB DME		2700' (698') R3000m	2700' (698') R3000m	2700' (698') R3200m	2700' (698') R3200m
ALS out		R3400m	R3400m	R3600m	R3600m
① NDB		2700' (698') R2800m	2700' (698') R2800m	2700' (698') R2800m	2700' (698') R2800m
ALS out		R3200m	R3200m	R3200m	R3200m
NDB		2700' (698') R3000m	2700' (698') R3000m	2700' (698') R3200m	2700' (698') R3200m
ALS out	R3400m	R3400m	R3600m	R3600m	

① Continuous Descent Final Approach.

OSDI/DAM



Standard

DAMASCUS, SYRIA
DAMASCUS INTL

STRAIGHT-IN RWY		A	B	C	D
23R	CAT 2 ILS	2095' (100')	2095' (100')	2095' (100')	2095' (100')
		RA 103' R300m	RA 103' R300m	RA 103' R300m	RA 103' R300m
	ILS	2195' (200')	2195' (200')	2195' (200')	2206' (211')
	FULL	R550m	R550m	R550m	R550m
	TDZ or CL out	① R550m	① R550m	① R550m	① R550m
	ALS out	R1200m	R1200m	R1200m	R1200m
	② LOC	2310' (315')	2310' (315')	2310' (315')	2310' (315')
		R750m	R750m	R750m	R750m
	ALS out	R1400m	R1400m	R1400m	R1400m
	LOC	2310' (315')	2310' (315')	2310' (315')	2310' (315')
		R1000m	R1000m	R1200m	R1200m
	ALS out	R1600m	R1600m	R1800m	R1800m
	RNAV (LNAV/VNAV)	2250' (255')	2250' (255')	2250' (255')	2250' (255')
		③ R750m	③ R750m	③ R750m	③ R750m
	ALS out	R1300m	R1300m	R1300m	R1300m
	② RNAV (LNAV)	2270' (275')	2270' (275')	2270' (275')	2270' (275')
		R750m	R750m	R750m	R750m
	ALS out	R1300m	R1300m	R1300m	R1300m
	② VOR DME	2500' (505')	2500' (505')	2500' (505')	2500' (505')
		R1600m	R1600m	R1600m	R1600m
	ALS out	R2400m	R2400m	R2400m	R2400m
	VOR DME	2500' (505')	2500' (505')	2500' (505')	2500' (505')
		R1800m	R1800m	R2000m	R2000m
	ALS out	R2600m	R2600m	R2800m	R2800m

- ① RVR 750m when a Flight Director or Autopilot or HUD to DA is not used.
- ② Continuous Descent Final Approach.
- ③ With TDZ & CL & HUD: RVR 600m.

CIRCLE-TO-LAND	A	B	C	D
	NOT AUTHORIZED			

TAKE-OFF

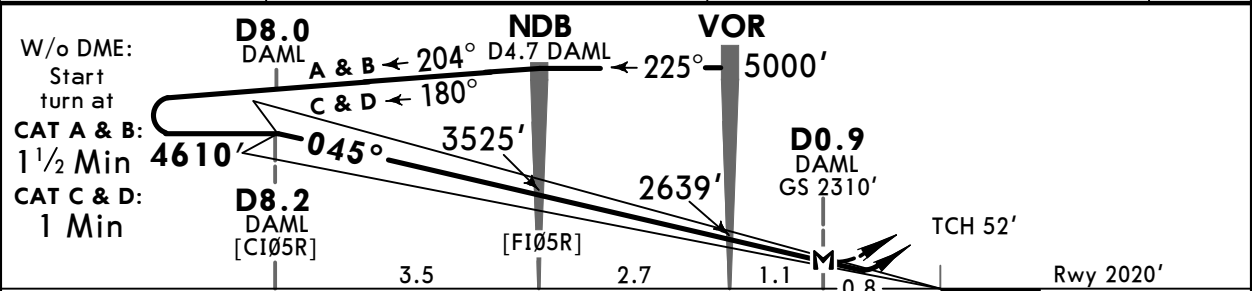
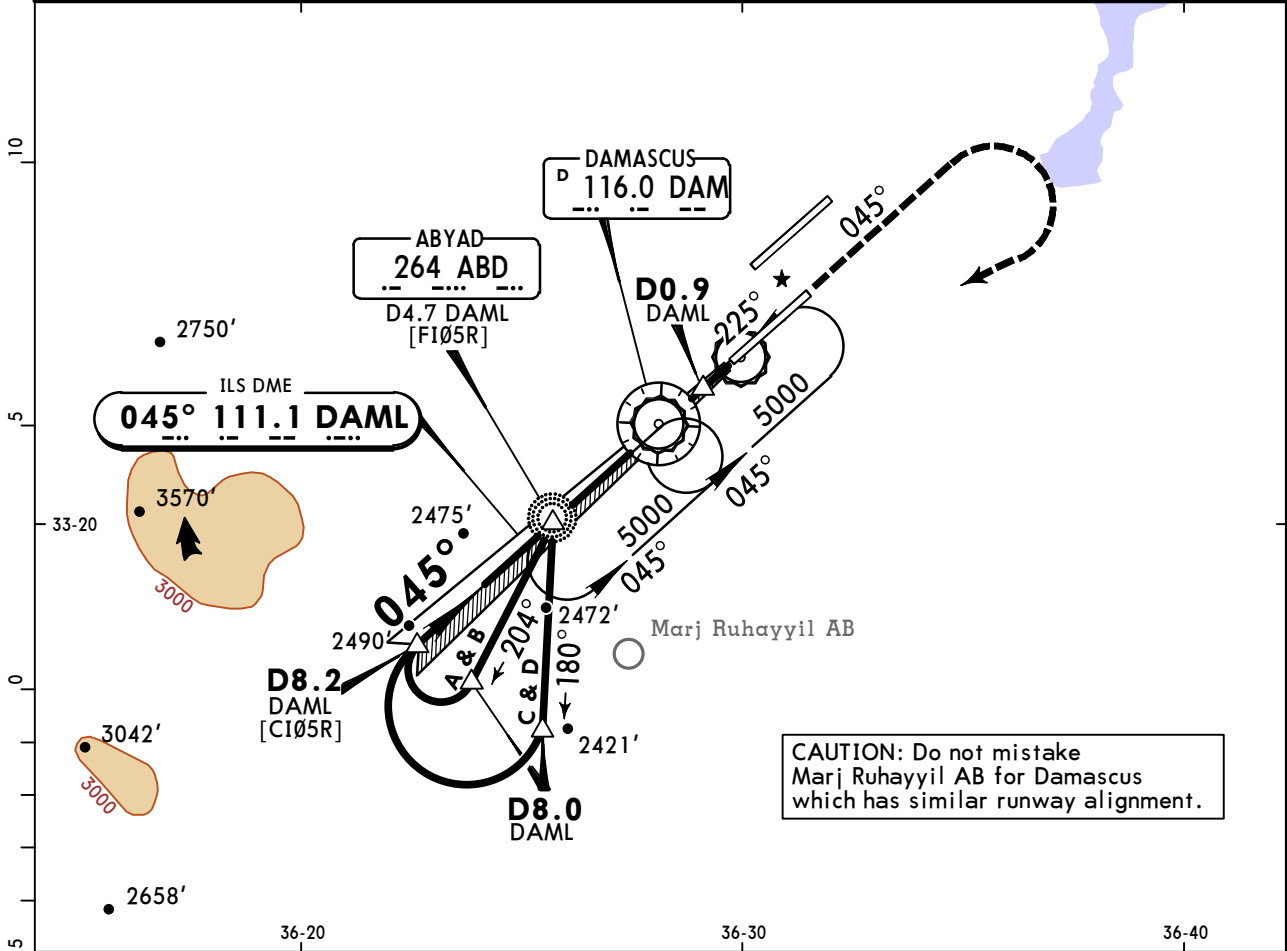
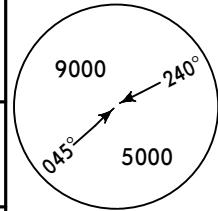
	Low Visibility Take-off			Day: RL or RCLM Night: RL or CL	Adequate vis ref (Day only)
	RL, CL & relevant RVR	RL & CL	Day: RL & RCLM Night: RL or CL		
A					
B	TDZ, MID, RO				
C	R150m	R200m	R300m	400m	500m
D					

OSDI/DAM
DAMASCUS INTL

JEPPESEN
19 JUL 19 **(11-1)**

DAMASCUS, SYRIA
VOR ILS DME Rwy 05R

ATIS 128.225		DAMASCUS Control (APP) 120.0		DAMASCUS Radar 121.3		DAMASCUS Tower 118.5		Ground 121.9	
LOC DAML 111.1		Final Apch Crs 045°		GS D8.2 DAML 4610' (2590')		ILS DA(H) Refer to Minimums		Apt Elev 2020' Rwy 2020'	
MISSED APCH: Climb on heading 045°, turn RIGHT inbound VOR climbing to 5000'.									
Alt Set: hPa		Rwy Elev: 72 hPa		Trans level: FL 150		Trans alt: 13000'		MSA DAM VOR	



W/o DME: Start turn at	D8.0 DAML	NDB	VOR						
CAT A & B: 1 1/2 Min	4610'	3525'	5000'						
CAT C & D: 1 Min	4610'	3525'	5000'						
	D8.2 DAML [CI05R]	[FI05R]	D0.9 DAML GS 2310'						
	3.5	2.7	1.1	0.8					

Gnd speed-Kts						HIALS-II		045° hdg		5000'		DAM	
ILS GS or						PAPI		↑		RT		116.0	
LOC Descent Angle													
MAP at D0.9 DAML													

STRAIGHT-IN LANDING RWY 05R								CIRCLE-TO-LAND					
ILS				LOC (GS out)									
DA(H) ABC: 2220' (200') D: 2231' (211')				MDA(H) 2310' (290')									
FULL		TDZ or CL out		ALS out		ALS out							
A								A					
B								B					
C	RVR 550m VIS 800m	RVR 720m VIS 800m	1200m		RVR 720m VIS 800m		RVR 1500m VIS 1600m	C					NOT AUTHORIZED
D					1200m			D					

PANS OPS

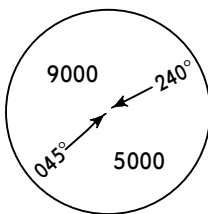
OSDI/DAM
DAMASCUS INTL

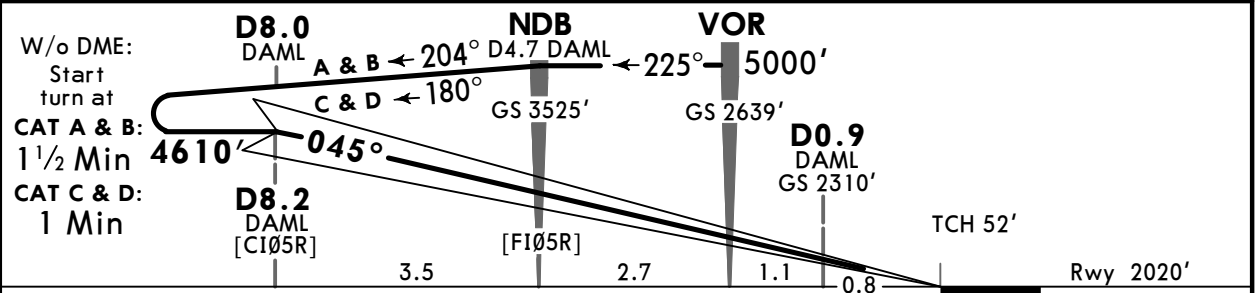
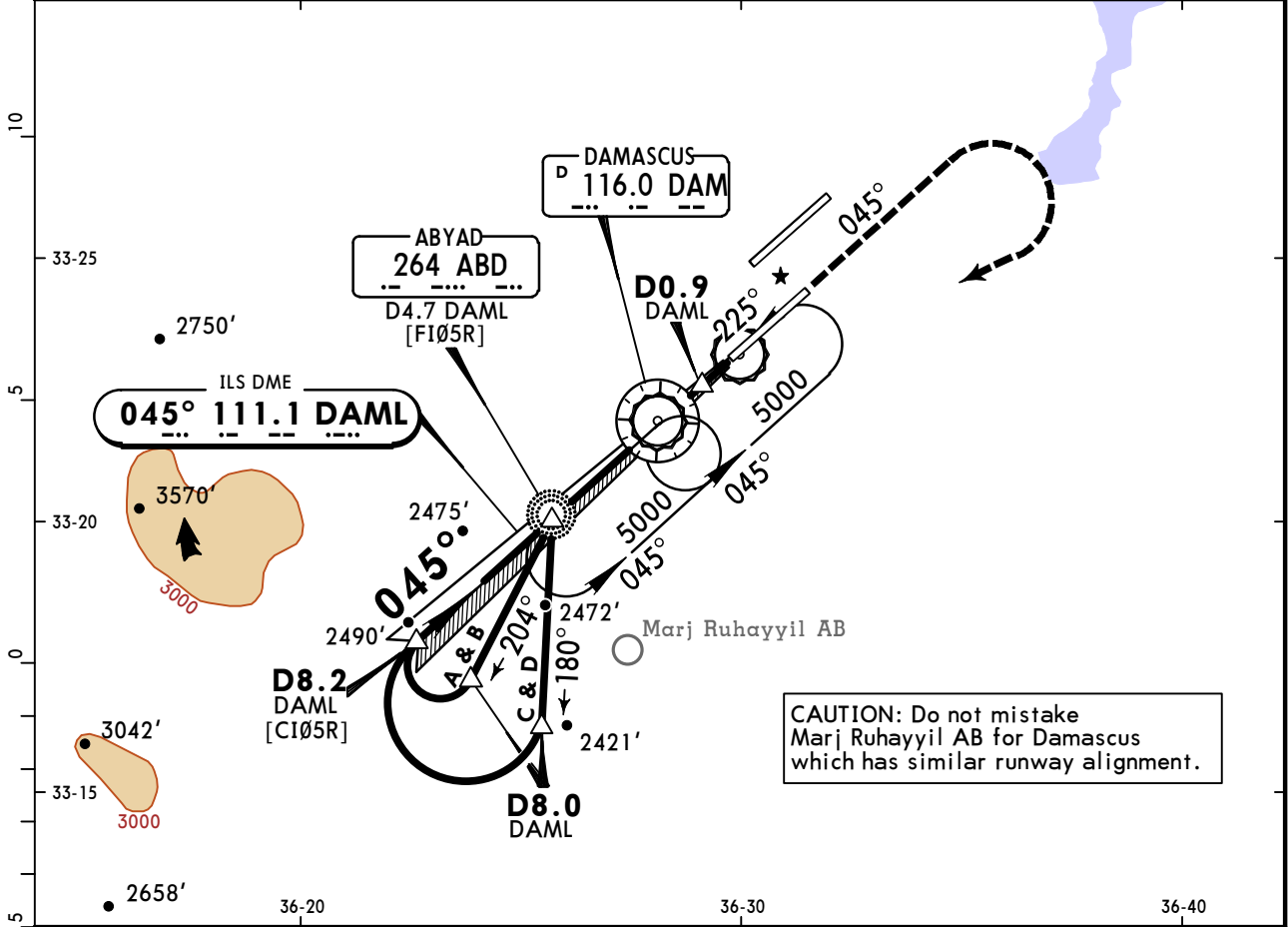
19 JUL 19

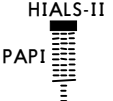

JEPPESEN

11-1A

DAMASCUS, SYRIA
CAT II VOR ILS DME Rwy 05R

ATIS 128.225	DAMASCUS Control (APP) 120.0	DAMASCUS Radar 121.3	DAMASCUS Tower 118.5	Ground 121.9
LOC DAML 111.1	Final Apch Crs 045°	GS D8.2 DAML 4610' (2590')	CAT II ILS RA 102' DA(H) 2120'(100')	Apt Elev 2020' Rwy 2020'
MISSED APCH: Climb on heading 045°, turn RIGHT inbound VOR climbing to 5000'.				
Alt Set: hPa Rwy Elev: 72 hPa Trans level: FL 150 Trans alt: 13000'				
Special Aircrew & Acft Certification Required.				



Gnd speed-Kts	70	90	100	120	140	160	HIALS-II 	045° hdg ↑	5000' 	DAM 116.0
GS	3.00°	372	478	531	637	743				

STRAIGHT-IN LANDING RWY 05R
CAT II ILS
ABCD
RA 102'
DA(H) **2120'**(100')

RVR 350m

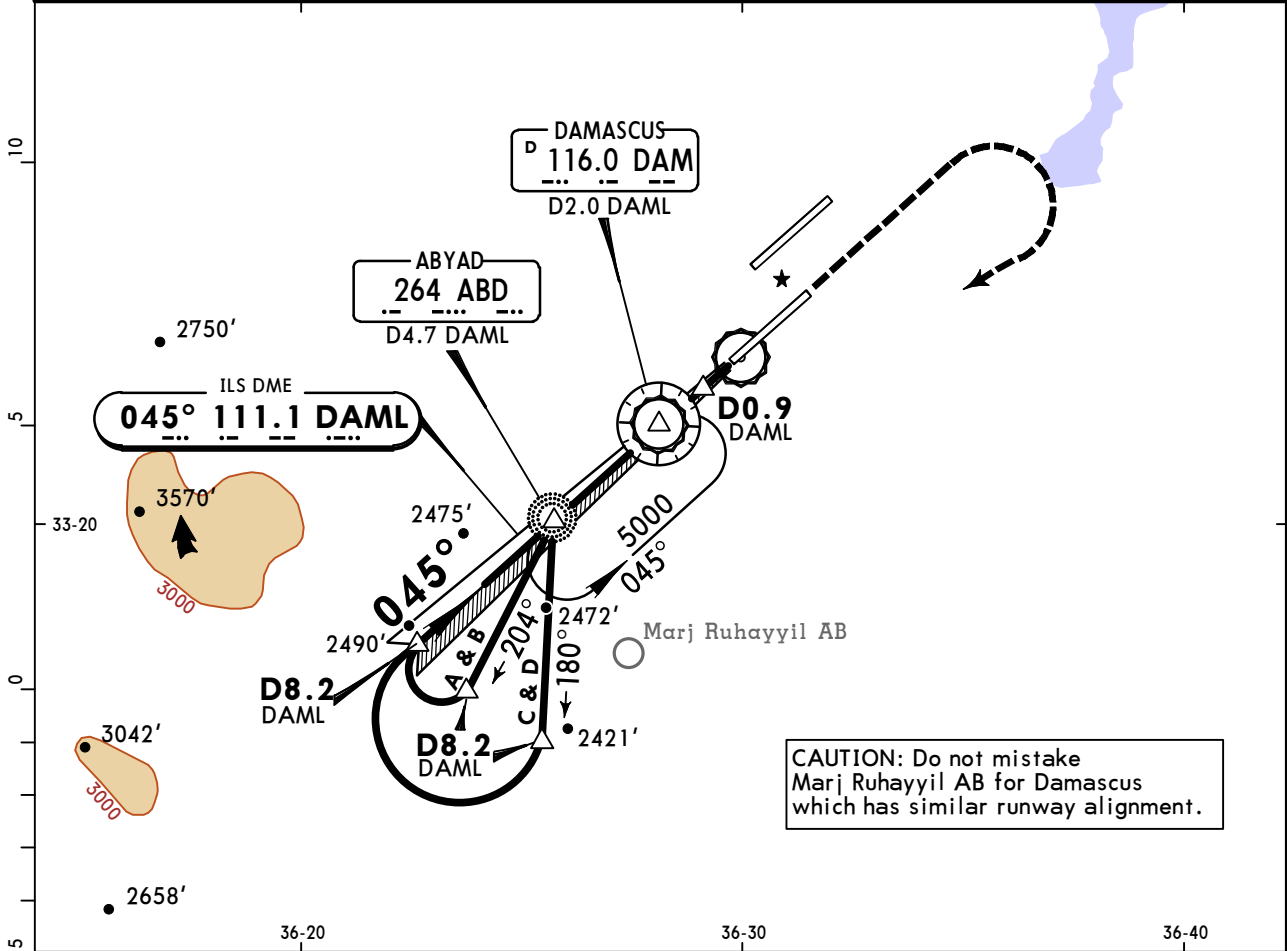
PANS OPS

OSDI/DAM
DAMASCUS INTL

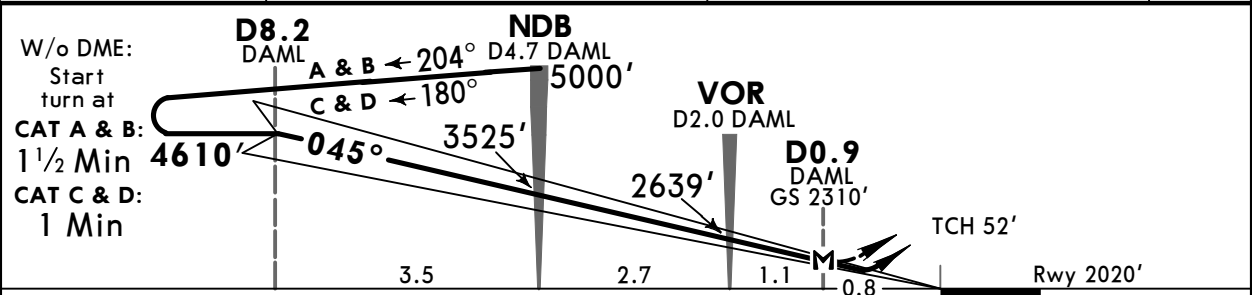
JEPPESEN
19 JUL 19 **(11-2)**

DAMASCUS, SYRIA
NDB ILS DME Rwy 05R

ATIS 128.225	DAMASCUS Control (APP) 120.0	DAMASCUS Radar 121.3	DAMASCUS Tower 118.5	Ground 121.9
LOC DAML 111.1	Final Apch Crs 045°	GS D8.2 DAML 4610' (2590')	ILS DA(H) Refer to Minimums	Apt Elev 2020' Rwy 2020'
MISSED APCH: Climb STRAIGHT AHEAD, then climbing turn RIGHT to NDB to 5000'.				
Alt Set: hPa	Rwy Elev: 72 hPa	Trans level: FL 150	Trans alt: 13000'	



CAUTION: Do not mistake Marj Ruhayyil AB for Damascus which has similar runway alignment.



Gnd speed-Kts	70	90	100	120	140	160	HIALS-II PAPI 	5000' 	ABD 264	
ILS GS or LOC Descent Angle	3.00°	372	478	531	637	743				849
MAP at D0.9 DAML										

STRAIGHT-IN LANDING RWY 05R					CIRCLE-TO-LAND	
ILS DA(H) ABC: 2220' (200') D: 2231' (211')			LOC (GS out) MDA(H) 2310' (290')			
FULL	TDZ or CL out	ALS out	ALS out			
A					A	NOT AUTHORIZED
B			RVR 720m VIS 800m	RVR 1500m VIS 1600m	B	
C	RVR 550m VIS 800m	RVR 720m VIS 800m	1200m		C	
D			1200m		D	

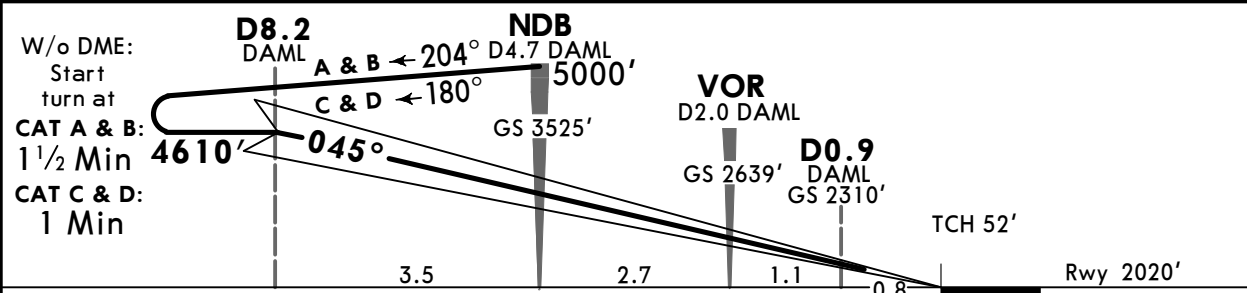
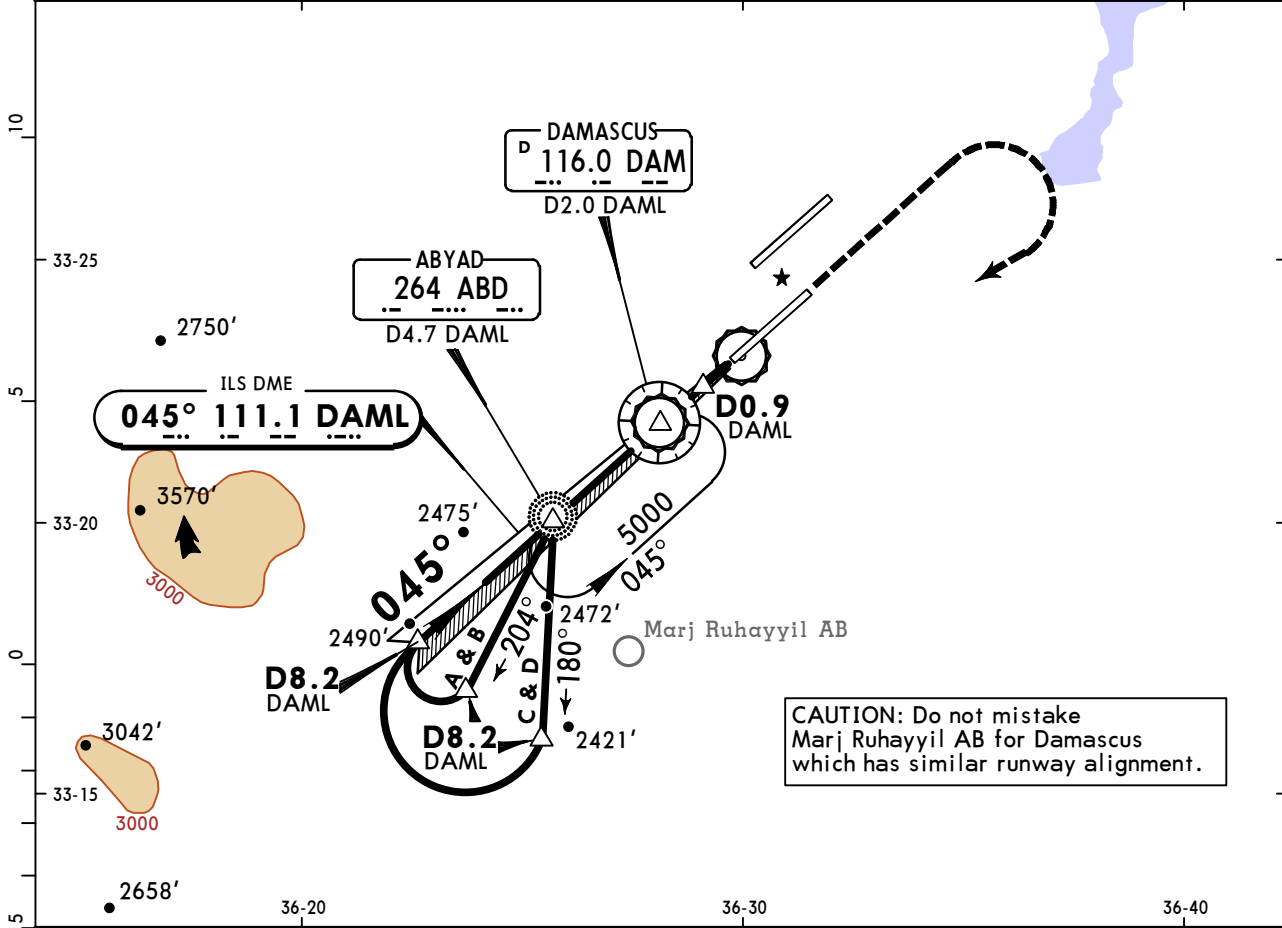
PANS OPS

OSDI/DAM
DAMASCUS INTL

JEPPESEN
19 JUL 19 **(11-2A)**

DAMASCUS, SYRIA
CAT II NDB ILS DME Rwy 05R

ATIS 128.225	DAMASCUS Control (APP) 120.0	DAMASCUS Radar 121.3	DAMASCUS Tower 118.5	Ground 121.9	
LOC DAML 111.1	Final Apch Crs 045°	GS D8.2 DAML 4610' (2590')	CAT II ILS RA 102' DA(H) 2120'(100')	Apt Elev 2020' Rwy 2020'	
MISSED APCH: Climb STRAIGHT AHEAD, then climbing turn RIGHT to NDB to 5000'.					
Alt Set: hPa		Rwy Elev: 72 hPa	Trans level: FL 150		Trans alt: 13000'
Special Aircrew & Acft Certification Required.					MSA DAM VOR



Gnd speed-Kts	70	90	100	120	140	160	HIALS-II PAPI 	5000' 	ABD 264
GS	3.00°	372	478	531	637	743			

STRAIGHT-IN LANDING RWY 05R
CAT II ILS
ABCD
RA 102'
DA(H) **2120'**(100')

RVR 350m

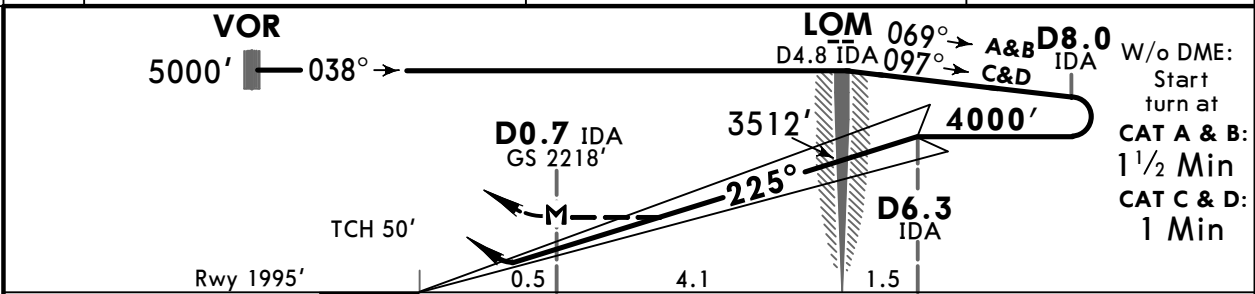
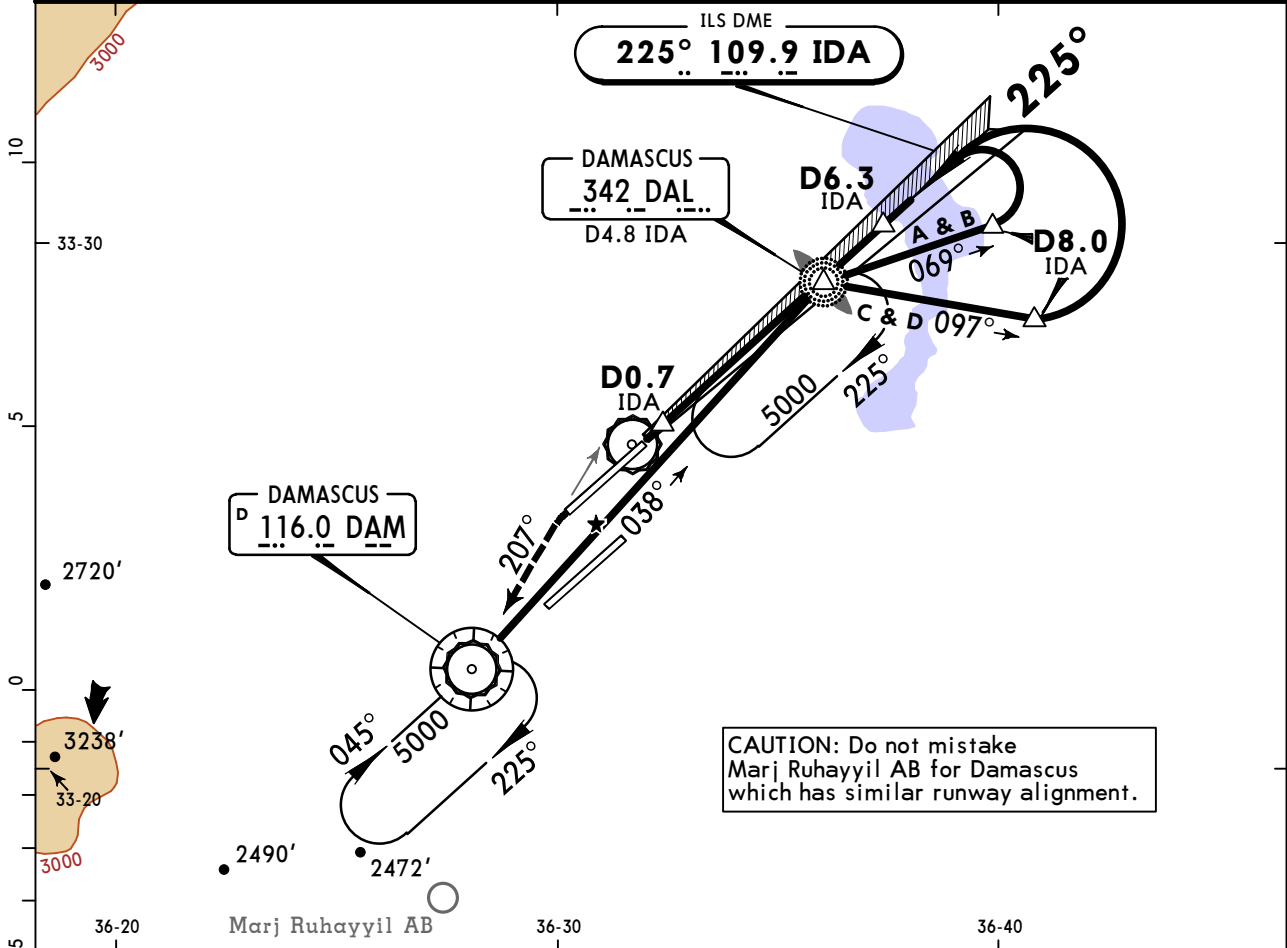
PANS OPS

OSDI/DAM
DAMASCUS INTL

JEPPESSEN
19 JUL 19 **(11-3)**

DAMASCUS, SYRIA
VOR ILS DME Rwy 23R

ATIS 128.225	DAMASCUS Control (APP) 120.0	DAMASCUS Radar 121.3	DAMASCUS Tower 118.5	Ground 121.9
LOC IDA 109.9	Final Apch Crs 225°	GS D6.3 IDA 4000' (2005')	ILS DA(H) Refer to Minimums	Apt Elev 2020' Rwy 1995'
MISSED APCH: Climb on heading 225°, intercept R-027 inbound VOR climbing to 5000'.				
Alt Set: hPa	Rwy Elev: 71 hPa	Trans level: FL 150	Trans alt: 13000'	MSA DAM VOR



Gnd speed-Kts	70	90	100	120	140	160	HIALS-II PAPI 225° hdg 5000' onto DAM LT onto R-027	
ILS GS or LOC Descent Angle	3.00°	372	478	531	637	743		849
MAP at D0.7 IDA								

STRAIGHT-IN LANDING RWY 23R				CIRCLE-TO-LAND	
ILS DA(H) ABC: 2195' (200') D: 2206' (211')			LOC (GS out) MDA(H) 2310' (315')		NOT AUTHORIZED
FULL	TDZ or CL out	ALS out	ALS out		
A				A	
B	RVR 550m VIS 800m	RVR 720m VIS 800m	1200m	B	
C				C	
D			1200m	D	

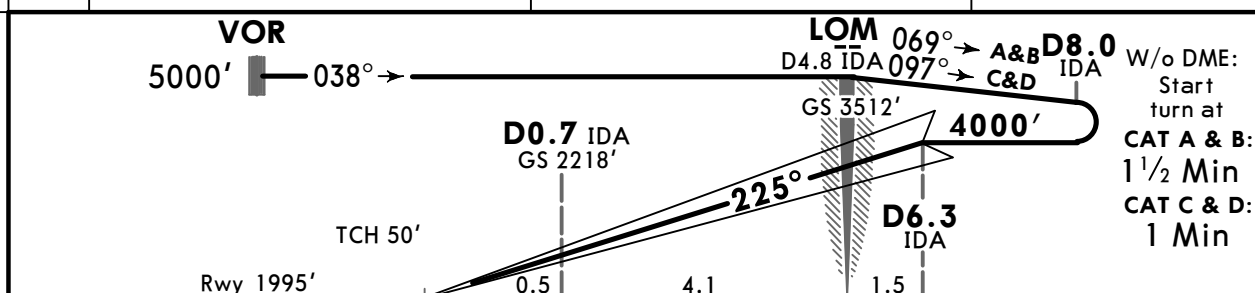
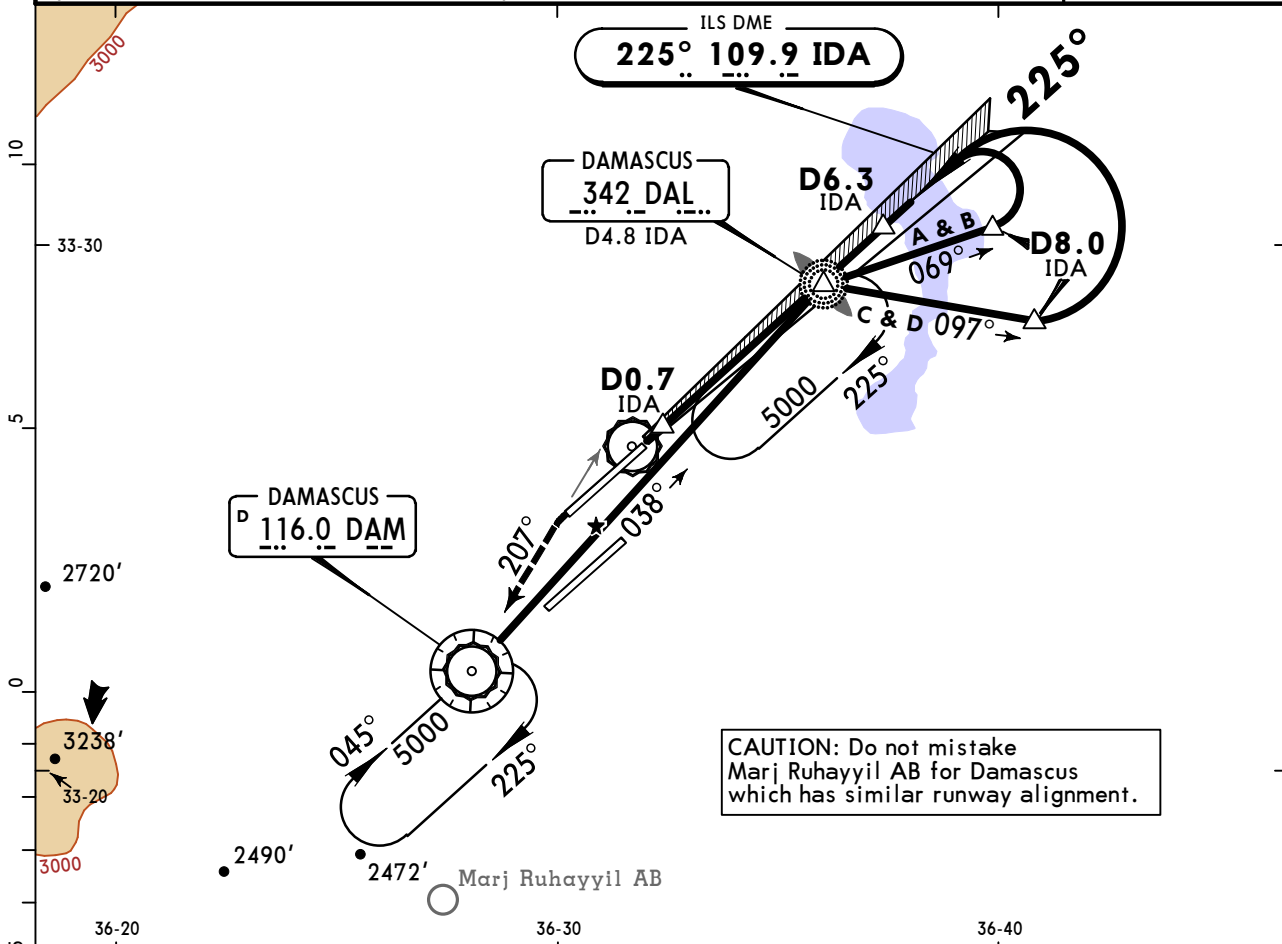
PANS OPS

OSDI/DAM
DAMASCUS INTL

JEPPESEN
19 JUL 19 **(11-3A)**

DAMASCUS, SYRIA
CAT II VOR ILS DME Rwy 23R

ATIS 128.225	DAMASCUS Control (APP) 120.0	DAMASCUS Radar 121.3	DAMASCUS Tower 118.5	Ground 121.9
LOC IDA 109.9	Final Apch Crs 225°	GS D6.3 IDA 4000' (2005')	CAT II ILS RA 103' DA(H) 2095'(100')	Apt Elev 2020' Rwy 1995'
MISSED APCH: Climb on heading 225°, intercept R-027 inbound VOR climbing to 5000'.				<p>MSA DAM VOR</p>
Alt Set: hPa Rwy Elev: 71 hPa Trans level: FL 150 Trans alt: 13000'				
Special Aircrew & Acft Certification Required.				



Gnd speed-Kts	70	90	100	120	140	160	HIALS-II PAPI 	225° hdg ↑	5000' ↑ onto LT	DAM 116.0 R-027
GS	3.00°	372	478	531	637	743				

STRAIGHT-IN LANDING RWY 23R
CAT II ILS
ABCD
RA 103'
DA(H) **2095' (100')**

RVR 350m

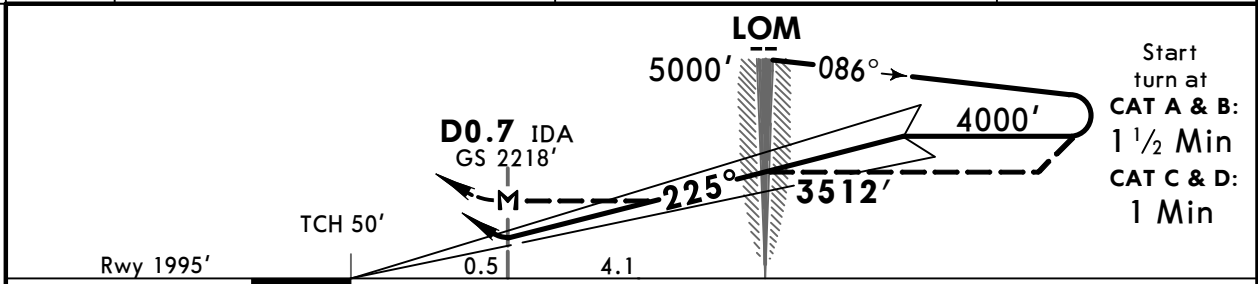
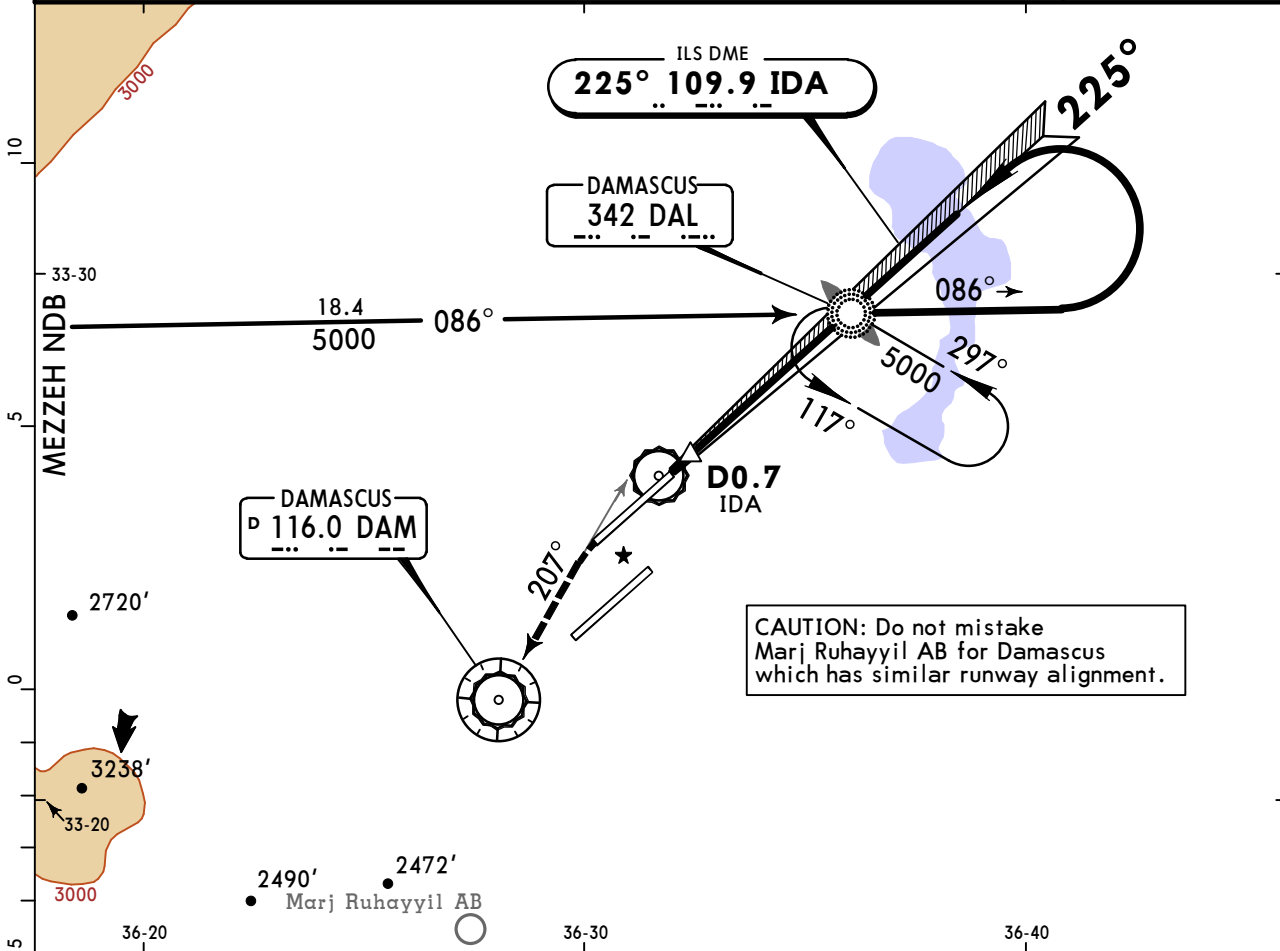
PANS OPS

OSDI/DAM
DAMASCUS INTL

JEPPESEN
19 JUL 19 **(11-4)**

DAMASCUS, SYRIA
NDB ILS 1 Rwy 23R

ATIS 128.225	DAMASCUS Control (APP) 120.0	DAMASCUS Radar 121.3	DAMASCUS Tower 118.5	Ground 121.9
LOC IDA 109.9	Final Apch Crs 225°	GS LOM 3512' (1517')	ILS DA(H) Refer to Minimums	Apt Elev 2020' Rwy 1995'
MISSED APCH: Climb on heading 225°, intercept R-027 inbound VOR climbing to 5000'.				
Alt Set: hPa	Rwy Elev: 71 hPa	Trans level: FL 150	Trans alt: 13000'	MSA DAL NDB



Gnd speed-Kts	70	90	100	120	140	160	HIALS-II	225°	5000'	DAM
ILS GS or LOC Descent Angle	3.00°	372	478	531	637	743	PAPI	hdg	LT	116.0
MAP at D0.7 IDA	R-027									

STRAIGHT-IN LANDING RWY 23R				
ILS			LOC (GS out)	
DA(H) ABC: 2195' (200') D: 2206' (211')			MDA(H) 2310' (315')	
FULL	TDZ or CL out	ALS out	ALS out	
A				
B	RVR 550m	RVR 720m	RVR 720m	RVR 1500m
C	VIS 800m	VIS 800m	1200m	VIS 1600m
D			1200m	

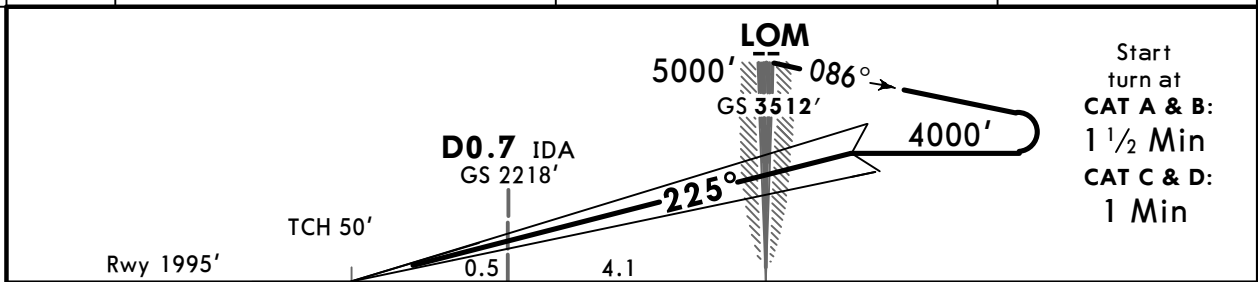
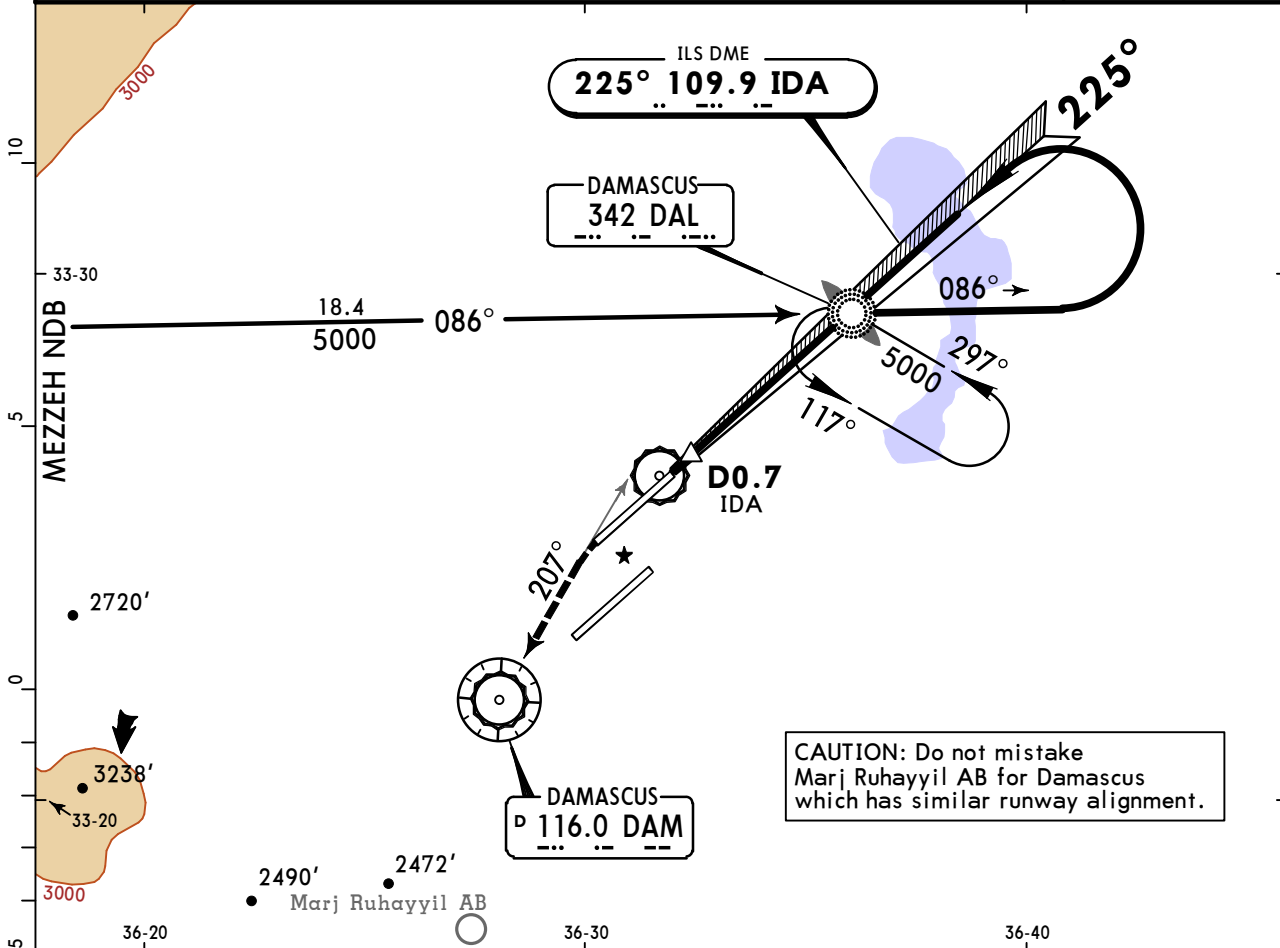
PANS OPS

OSDI/DAM DAMASCUS INTL

JEPPESSEN
19 JUL 19 **(11-4A)**

DAMASCUS, SYRIA CAT II NDB ILS 1 Rwy 23R

ATIS 128.225	DAMASCUS Control (APP) 120.0	DAMASCUS Radar 121.3	DAMASCUS Tower 118.5	Ground 121.9
LOC IDA 109.9	Final Apch Crs 225°	GS LOM 3512' (1517')	CAT II ILS RA 103' DA(H) 2095'(100')	Apt Elev 2020' Rwy 1995'
MISSED APCH: Climb on heading 225°, intercept R-027 inbound VOR climbing to 5000'.				
Alt Set: hPa	Rwy Elev: 71 hPa	Trans level: FL 150	Trans alt: 13000'	
Special Aircrew & Acft Certification Required.				



HIALS-II	225°	5000'	DAM
PAPI	hdg	LT	onto 116.0
	↑		R-027

STRAIGHT-IN LANDING RWY 23R
CAT II ILS
 ABCD
RA 103'
 DA(H) **2095'** (100')

RVR 350m

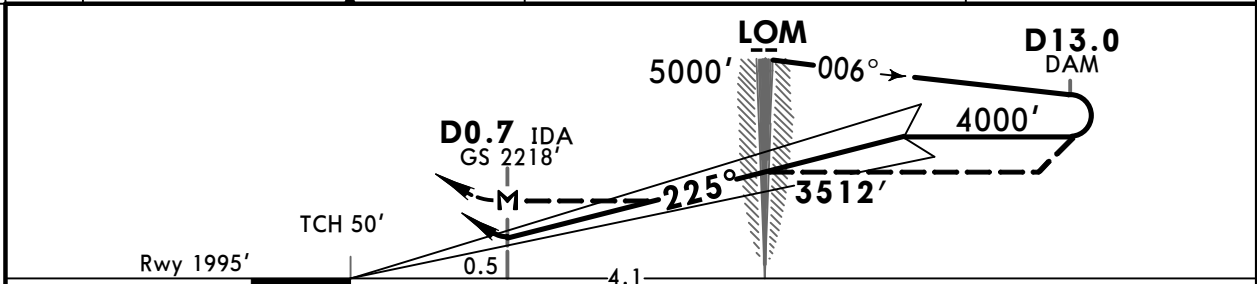
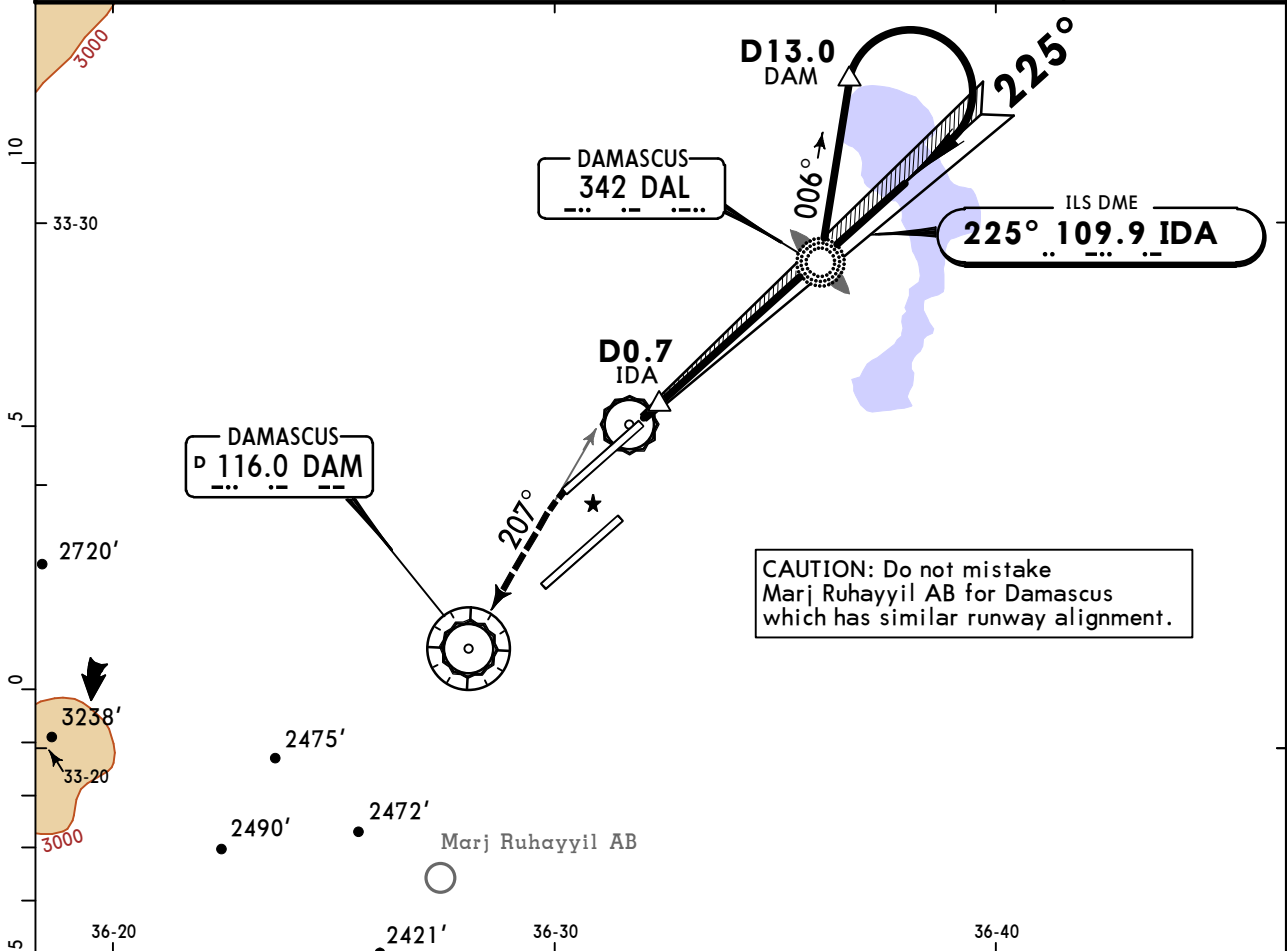
PANS OPS

OSDI/DAM DAMASCUS INTL

JEPPESSEN
19 JUL 19 **(11-5)**

DAMASCUS, SYRIA NDB ILS 2 Rwy 23R

ATIS 128.225	DAMASCUS Control (APP) 120.0	DAMASCUS Radar 121.3	DAMASCUS Tower 118.5	Ground 121.9
LOC IDA 109.9	Final Apch Crs 225°	GS LOM 3512' (1517')	ILS DA(H) Refer to Minimums	Apt Elev 2020' Rwy 1995'
MISSED APCH: Climb on heading 225°, intercept R-027 inbound VOR climbing to 5000'.				
Alt Set: hPa	Rwy Elev: 71 hPa	Trans level: FL 150	Trans alt: 13000'	MSA DAL NDB



Gnd speed-Kts	70	90	100	120	140	160	HIALS-II PAPI 	225° hdg ↑	5000' DAM ↙ onto 116.0 LT R-027	
ILS GS or	3.00°	372	478	531	637	743				849
LOC Descent Angle										
MAP at D0.7 IDA										

STRAIGHT-IN LANDING RWY 23R				
ILS			LOC (GS out)	
DA(H) ABC: 2195' (200') D: 2206' (211')			MDA(H) 2310' (315')	
FULL	TDZ or CL out	ALS out	ALS out	

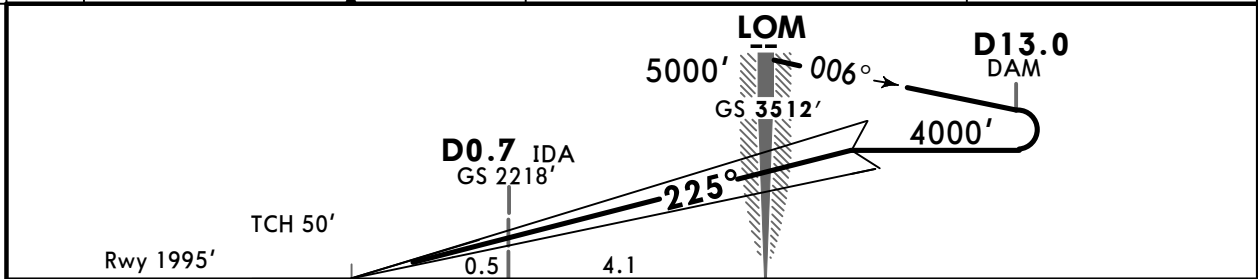
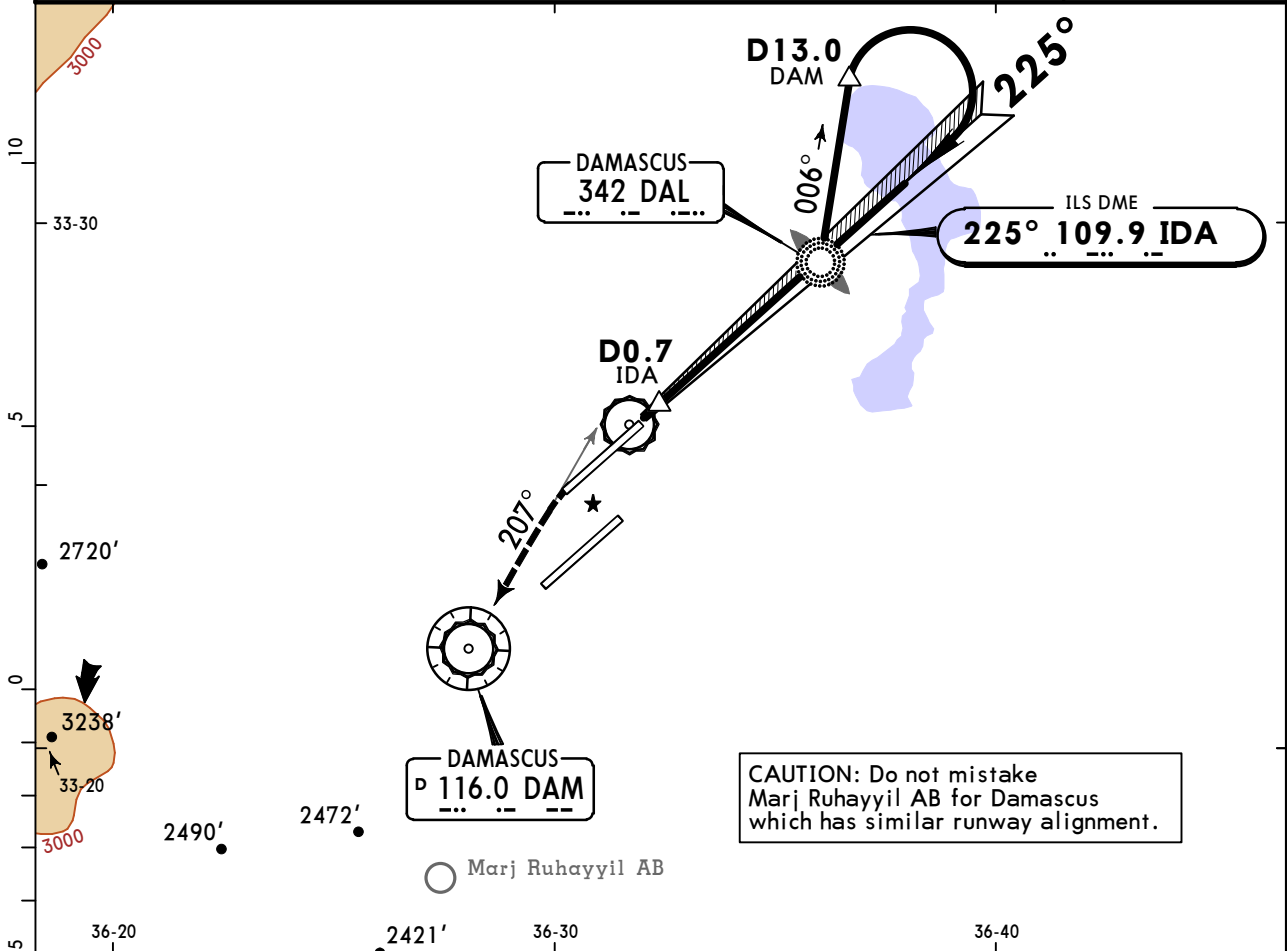
PANS OPS	A					
	B	RVR 550m	RVR 720m	1200m	RVR 720m VIS 800m	RVR 1500m VIS 1600m
	C	RVR 550m VIS 800m	RVR 720m VIS 800m	1200m		
	D			1200m		

OSDI/DAM
DAMASCUS INTL

JEPPESEN
19 JUL 19 **(11-5A)**

DAMASCUS, SYRIA
CAT II NDB ILS 2 Rwy 23R

ATIS 128.225	DAMASCUS Control (APP) 120.0	DAMASCUS Radar 121.3	DAMASCUS Tower 118.5	Ground 121.9
LOC IDA 109.9	Final Apch Crs 225°	GS LOM 3512' (1517')	CAT II ILS RA 103' DA(H) 2095'(100')	Apt Elev 2020' Rwy 1995'
MISSED APCH: Climb on heading 225°, intercept R-027 inbound VOR climbing to 5000'.				
Alt Set: hPa Rwy Elev: 71 hPa Trans level: FL 150 Trans alt: 13000'				
Special Aircrew & Acft Certification Required.				



Gnd speed-Kts	70	90	100	120	140	160	HIALS-II PAPI 	225° hdg ↑	5000' DAM ↙ onto LT 116.0 R-027	
GS	3.00°	372	478	531	637	743				849

STRAIGHT-IN LANDING RWY 23R
CAT II ILS
ABCD
RA 103'
DA(H) **2095'** (100')

RVR **350m**

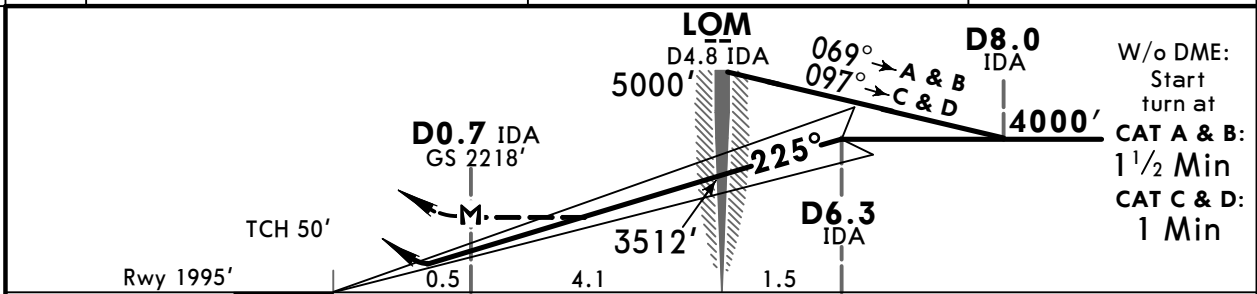
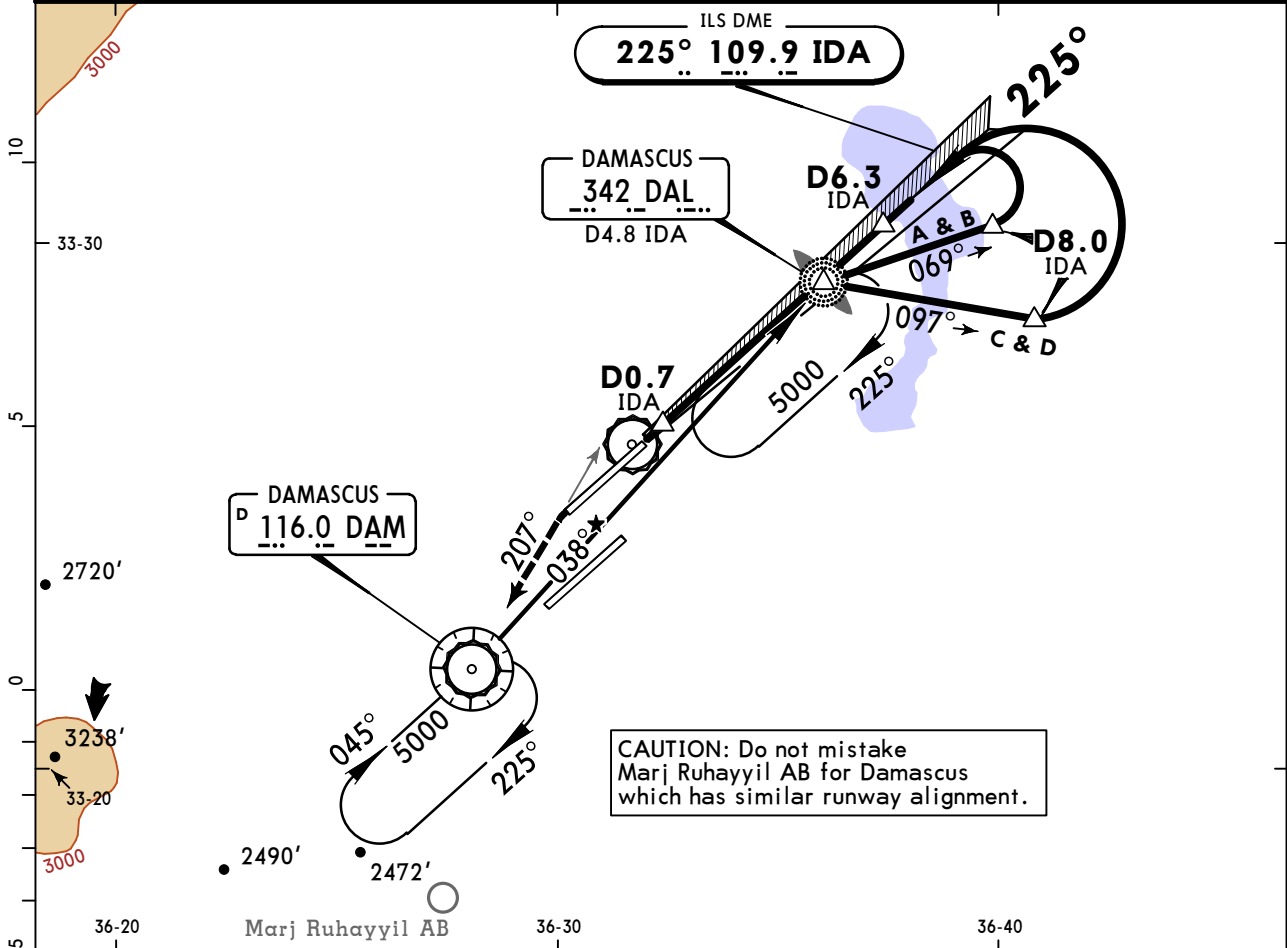
PANS OPS

OSDI/DAM
DAMASCUS INTL

JEPPESEN
19 JUL 19 **(11-6)**

DAMASCUS, SYRIA
NDB ILS DME 3 Rwy 23R

ATIS 128.225	DAMASCUS Control (APP) 120.0	DAMASCUS Radar 121.3	DAMASCUS Tower 118.5	Ground 121.9
LOC IDA 109.9	Final Apch Crs 225°	GS D6.3 IDA 4000' (2005')	ILS DA(H) Refer to Minimums	Apt Elev 2020' Rwy 1995'
MISSED APCH: Climb on heading 225°, intercept R-027 inbound VOR climbing to 5000'.				
Alt Set: hPa	Rwy Elev: 71 hPa	Trans level: FL 150	Trans alt: 13000'	MSA DAM VOR



Gnd speed-Kts	70	90	100	120	140	160	HIALS-II PAPI 225° hdg 5000' onto DAM LT onto R-027
ILS GS or LOC Descent Angle	3.00°	372	478	531	637	743	
MAP at D0.7 IDA							

STRAIGHT-IN LANDING RWY 23R				CIRCLE-TO-LAND	
ILS DA(H) ABC: 2195' (200') D: 2206' (211')			LOC (GS out) MDA(H) 2310' (315')		NOT AUTHORIZED
FULL	TDZ or CL out	ALS out	ALS out		
A				A	
B	RVR 550m VIS 800m	RVR 720m VIS 800m	1200m	B	
C				C	
D			1200m	D	

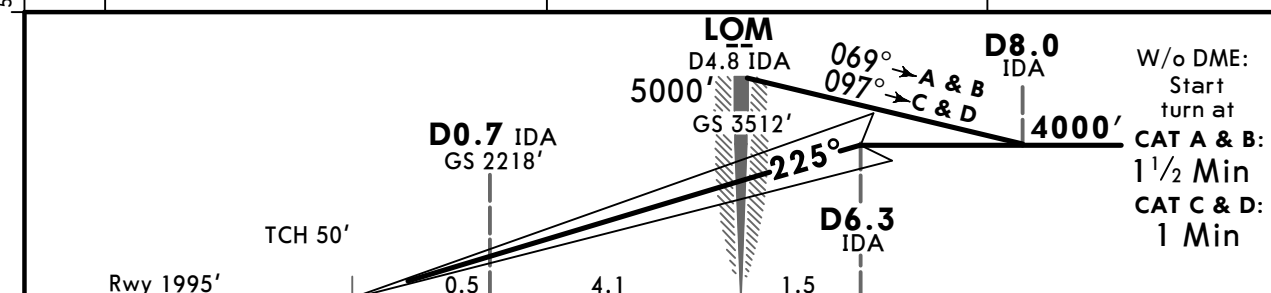
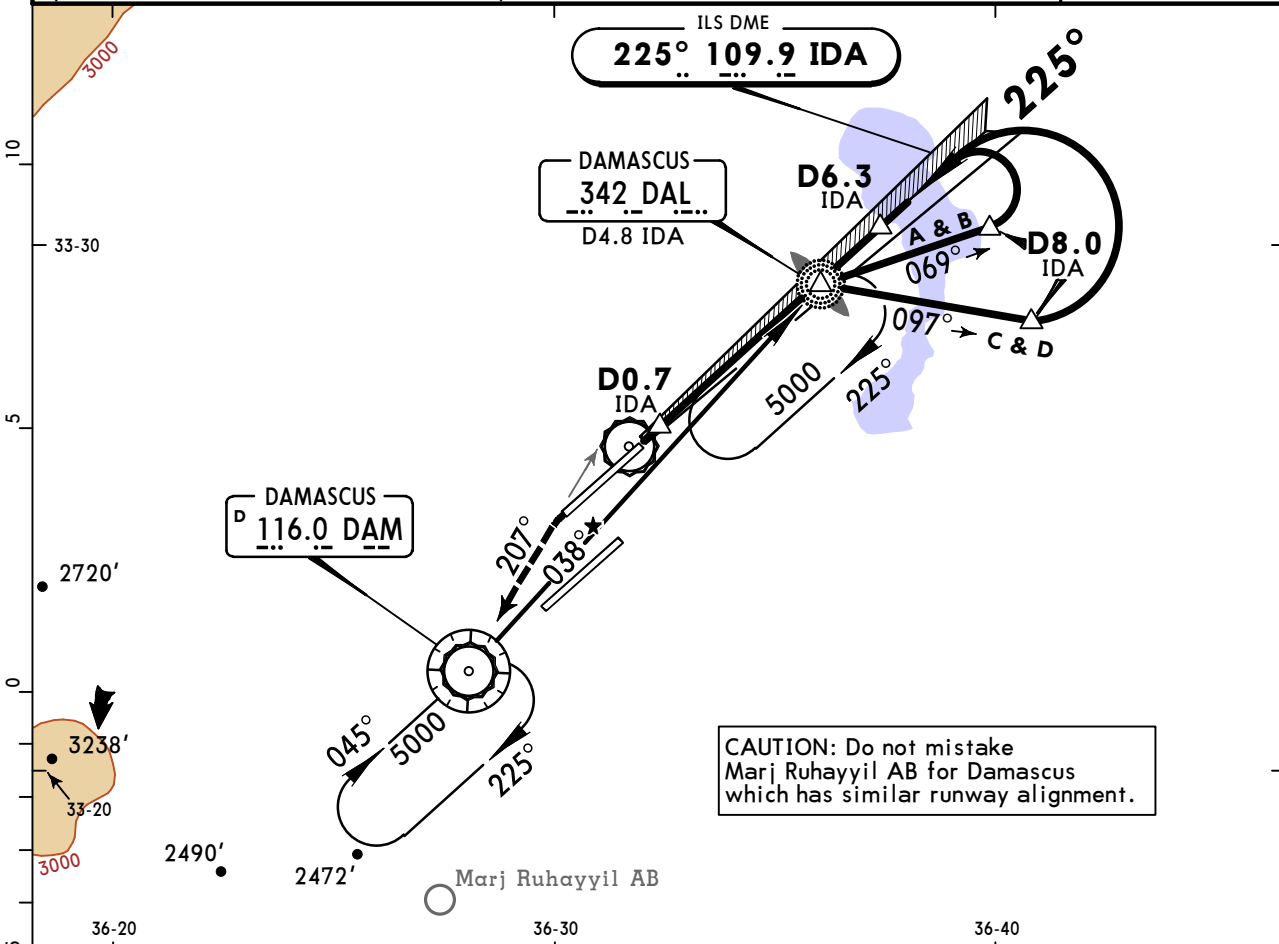
PANS OPS

OSDI/DAM
DAMASCUS INTL

JEPPESEN
19 JUL 19 **(11-6A)**

DAMASCUS, SYRIA
CAT II NDB ILS DME 3 Rwy 23R

ATIS 128.225	DAMASCUS Control (APP) 120.0	DAMASCUS Radar 121.3	DAMASCUS Tower 118.5	Ground 121.9	
LOC IDA 109.9	Final Apch Crs 225°	GS D6.3 IDA 4000' (2005')	CAT II ILS RA 103' DA(H) 2095'(100')	Apt Elev 2020' Rwy 1995'	
MISSED APCH: Climb on heading 225°, intercept R-027 inbound VOR climbing to 5000'.					
Alt Set: hPa		Rwy Elev: 71 hPa	Trans level: FL 150		Trans alt: 13000'
Special Aircrew & Acft Certification Required.					MSA DAM VOR



Gnd speed-Kts	70	90	100	120	140	160		225° hdg ↑	5000' DAM LT onto 116.0 R-027
GS	3.00°	372	478	531	637	743			

STRAIGHT-IN LANDING RWY 23R
CAT II ILS
ABCD
RA 103'
DA(H) **2095'** (100')

RVR 350m

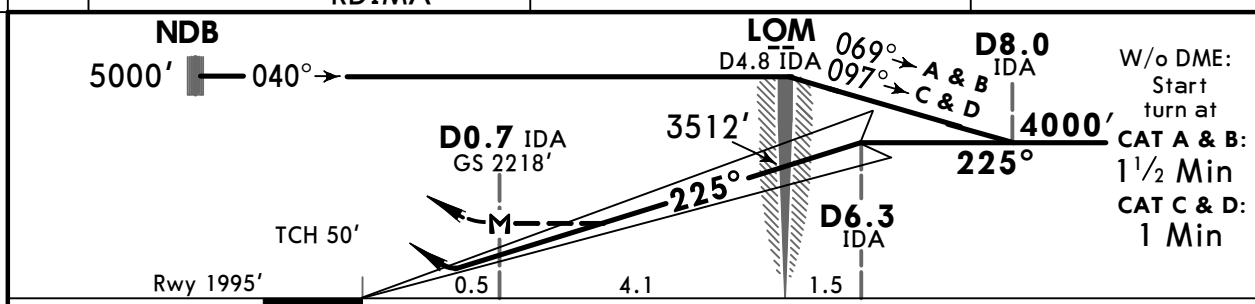
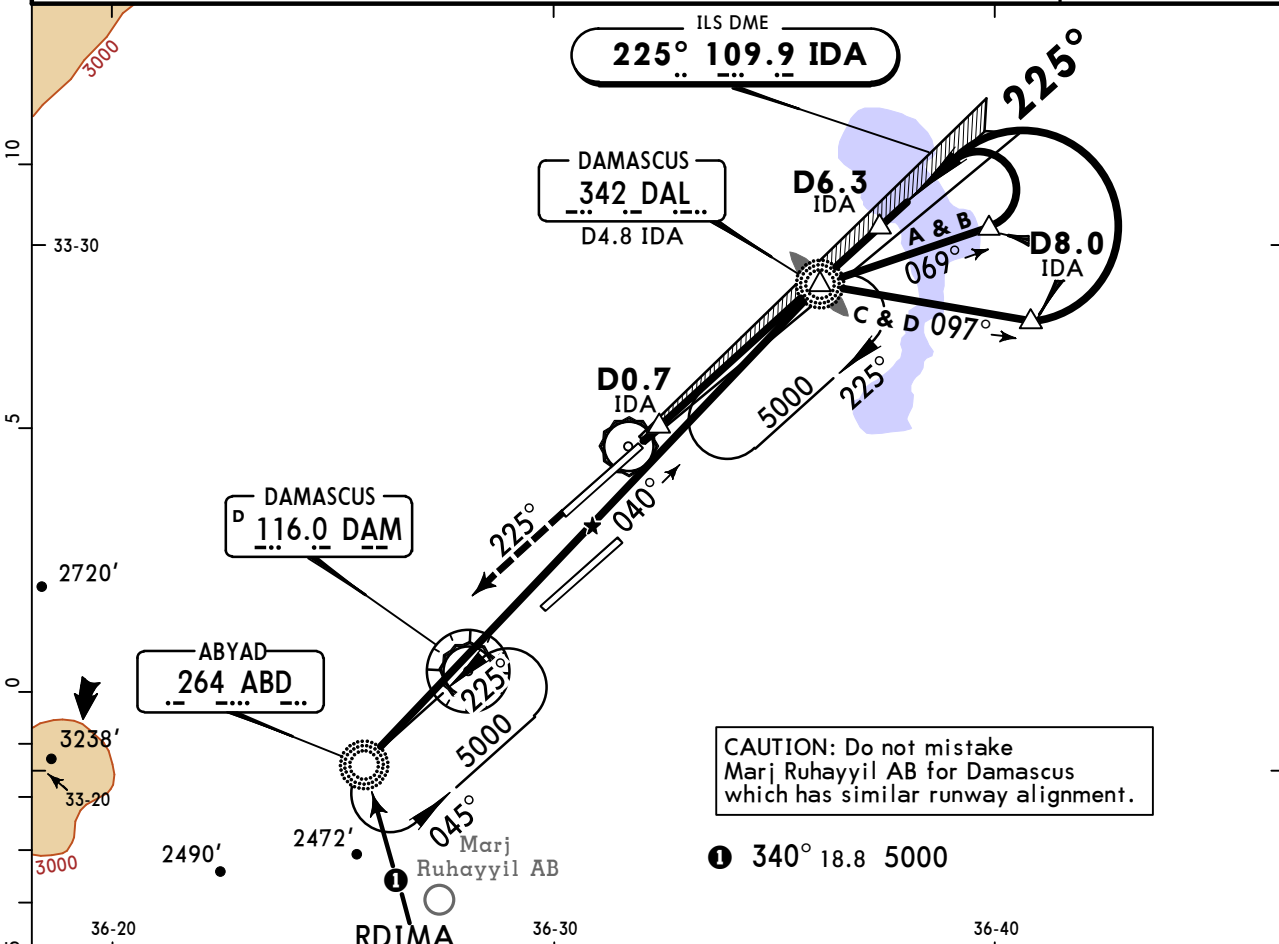
PANS OPS

OSDI/DAM DAMASCUS INTL

JEPPESSEN
19 JUL 19 (11-7)

DAMASCUS, SYRIA NDB ILS DME 4 Rwy 23R

ATIS 128.225	DAMASCUS Control (APP) 120.0	DAMASCUS Radar 121.3	DAMASCUS Tower 118.5	Ground 121.9
LOC IDA 109.9	Final Apch Crs 225°	GS D6.3 IDA 4000' (2005')	ILS DA(H) Refer to Minimums	Apt Elev 2020' Rwy 1995'
MISSED APCH: Climb on heading 225°, then proceed inbound to ABD NDB, climbing to 5000'.				
Alt Set: hPa	Rwy Elev: 71 hPa	Trans level: FL 150	Trans alt: 13000'	



Gnd speed-Kts	70	90	100	120	140	160	HIALS-II	225°	5000'	ABD
ILS GS or LOC Descent Angle	3.00°	372	478	531	637	743	PAPI	hdg	LT	264
MAP at D0.7 IDA										

STRAIGHT-IN LANDING RWY 23R				CIRCLE-TO-LAND	
ILS			LOC (GS out)		
DA(H) ABC: 2195' (200') D: 2206' (211')			MDA(H) 2310' (315')		
FULL	TDZ or CL out	ALS out	ALS out		
A				A	NOT AUTHORIZED
B	RVR 550m VIS 800m	RVR 720m VIS 800m	RVR 720m VIS 800m	B	
C		1200m	RVR 1500m VIS 1600m	C	
D			1200m	D	

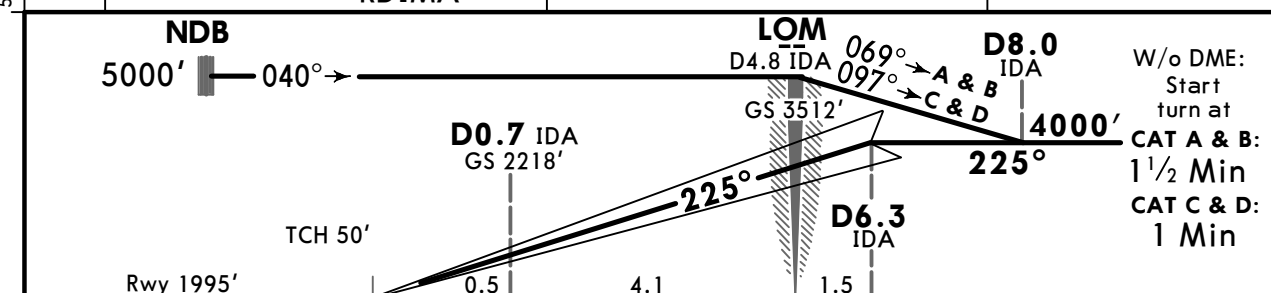
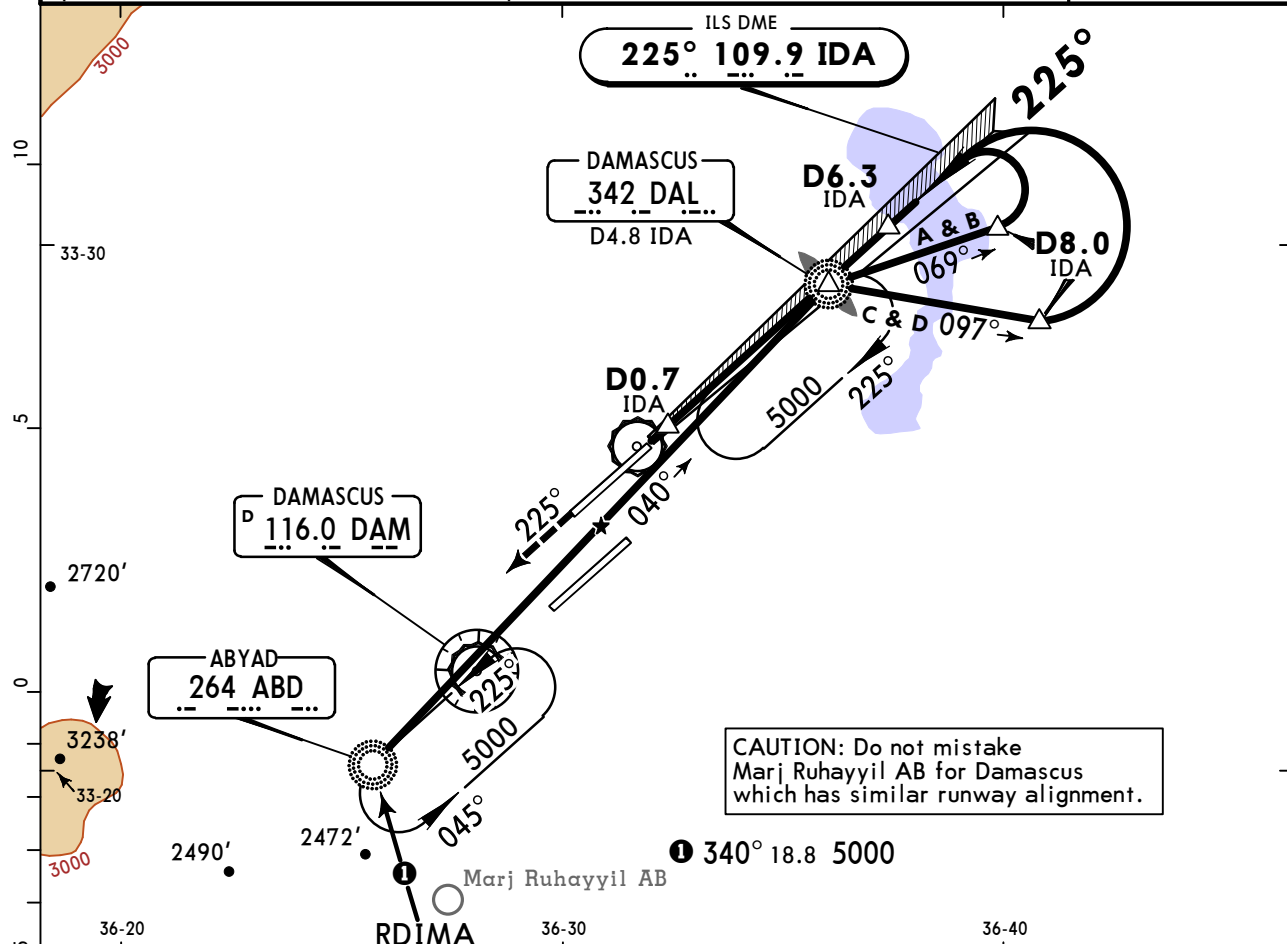
PANS OPS

OSDI/DAM
DAMASCUS INTL

JEPPESEN
19 JUL 19 **(11-7A)**

DAMASCUS, SYRIA
CAT II NDB ILS DME 4 Rwy 23R

ATIS 128.225	DAMASCUS Control (APP) 120.0	DAMASCUS Radar 121.3	DAMASCUS Tower 118.5	Ground 121.9
LOC IDA 109.9	Final Apch Crs 225°	GS D6.3 IDA 4000' (2005')	CAT II ILS RA 103' DA(H) 2095'(100')	Apt Elev 2020' Rwy 1995'
MISSED APCH: Climb on heading 225°, then proceed inbound to ABD NDB climbing to 5000'.				
Alt Set: hPa	Rwy Elev: 71 hPa	Trans level: FL 150	Trans alt: 13000'	
Special Aircrew & Acft Certification Required.				



Gnd speed-Kts	70	90	100	120	140	160	HTALS-II PAPI 	225° hdg ↑	5000' LT ↘	ABD 264
GS	3.00°	372	478	531	637	849				

STRAIGHT-IN LANDING RWY 23R
ABCD
RA 103'
 DA(H) **2095'(100')**

RVR 350m

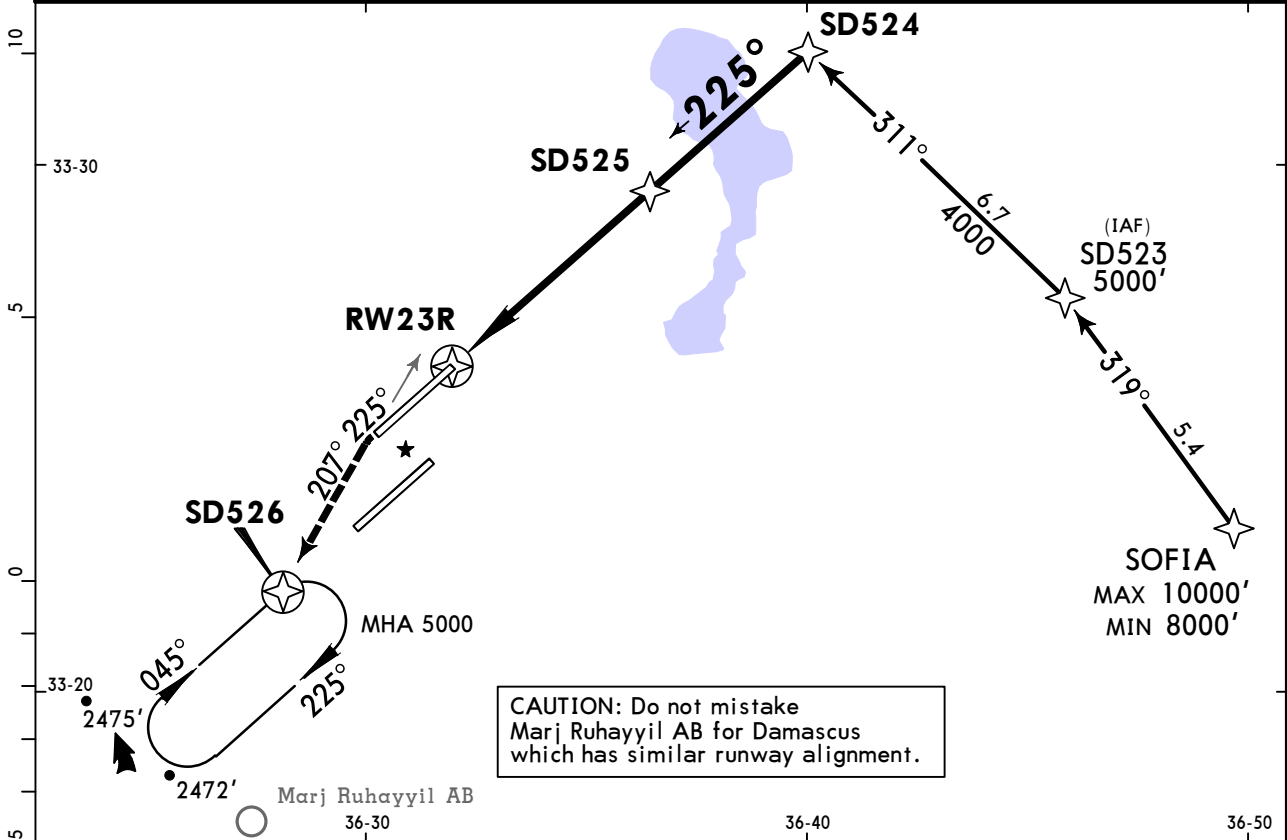
PANS OPS

OSDI/DAM
DAMASCUS INTL

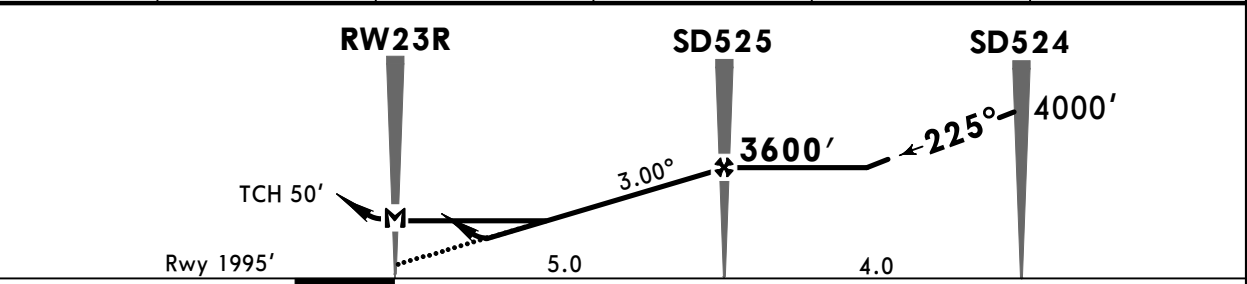
JEPPESEN
19 JUL 19 **(12-1)**

DAMASCUS, SYRIA
RNAV (GNSS) Rwy 23R

ATIS 128.225	DAMASCUS Control (APP) 120.0	DAMASCUS Radar 121.3	DAMASCUS Tower 118.5	Ground 121.9
RNAV	Final Apch Crs 225°	Minimum Alt SD525 3600' (1605')	LNAV/VNAV DA(H) 2250' (255')	Apt Elev 2020' Rwy 1995'
MISSED APCH: Climb on 225°. Intercept R-027 inbound climbing direct to SD526 at 5000', then as directed.				<p>MSA ARP</p>
Alt Set: hPa Rwy Elev: 71 hPa Trans level: FL 150 Trans alt: 13000'				
1. Procedure not authorized below 0°C. 2. If unable to continue RNAV (GNSS), request suitable IAP from controller.				



DIST to RW23R	1.0	2.0	3.0	4.0	5.0
ALTITUDE	2370'	2690'	3005'	3320'	3640'



Gnd speed-Kts	70	90	100	120	140	160	HIALS-II PAPI 225°
Descent Angle	3.00°	372	478	531	637	849	
LNAV/VNAV: MAP at DA							
LNAV: MAP at RW23R							

STRAIGHT-IN LANDING RWY 23R				CIRCLE-TO-LAND	
LNAV/VNAV DA(H) 2250' (255')			LNAV MDA(H) 2270' (275')		
FULL	TDZ or CL out	ALS out	ALS out		
A					A
B			RVR 720m VIS 800m		B
C	RVR 550m VIS 800m	RVR 720m VIS 800m	1200m	RVR 1500m VIS 1600m	C
D			1200m		D

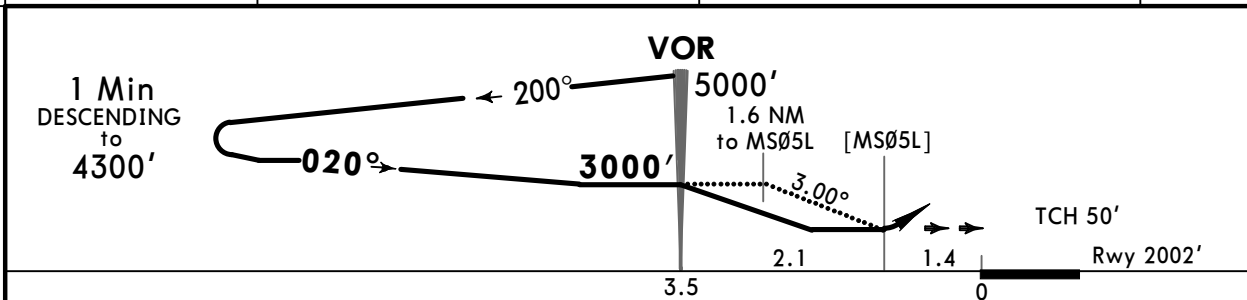
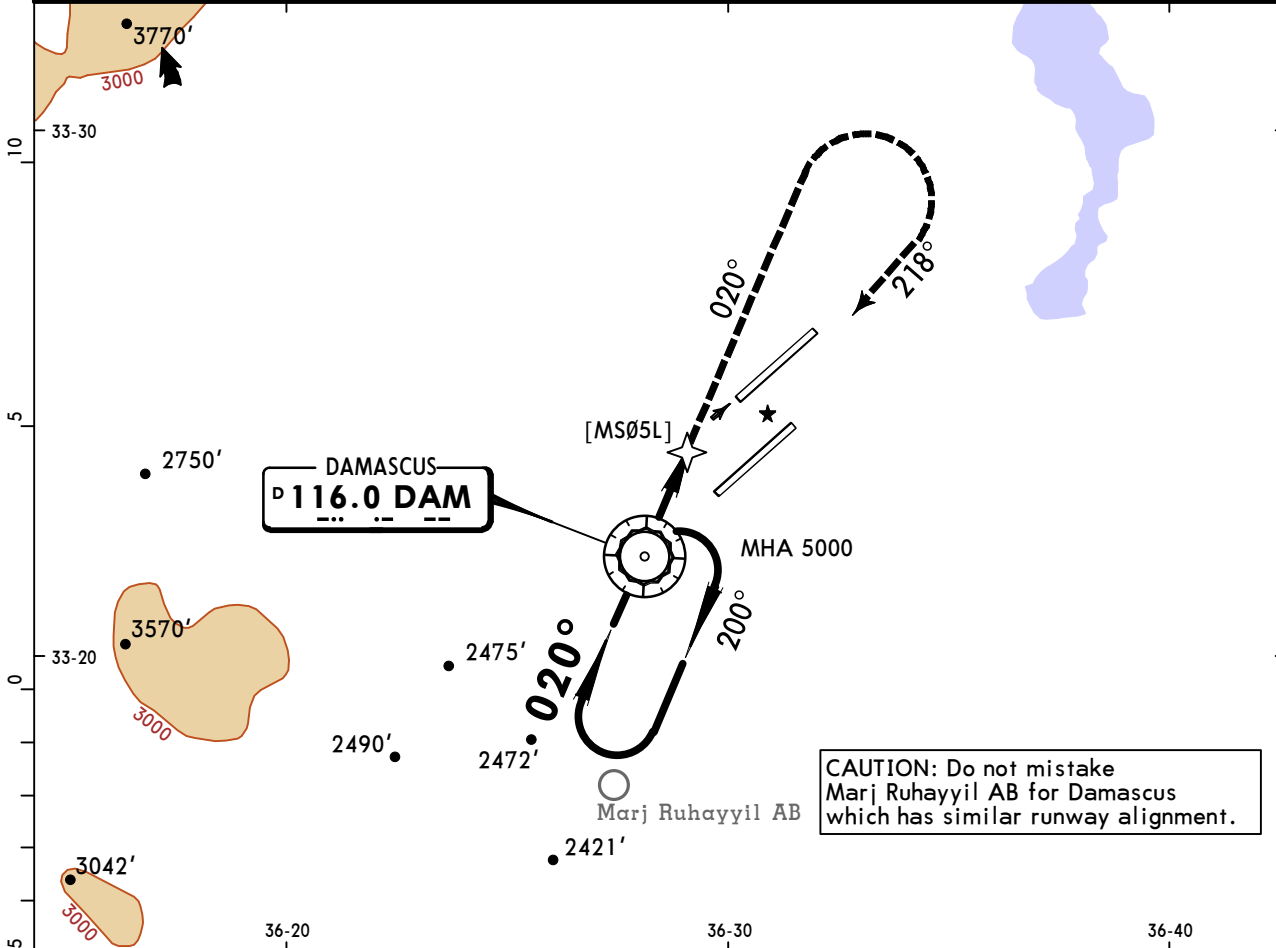
PANS OPS

OSDI/DAM
DAMASCUS INTL

JEPPESEN
19 JUL 19 **(13-1)**

DAMASCUS, SYRIA
VOR Rwy 05L

ATIS 128.225	DAMASCUS Control (APP) 120.0	DAMASCUS Radar 121.3	DAMASCUS Tower 118.5	Ground 121.9
VOR DAM 116.0	Final Apch Crs 020°	Minimum Alt VOR 3000' (998')	MDA(H) 2500' (498')	Apt Elev 2020' Rwy 2002'
MISSED APCH: Climb on R-020, then turn RIGHT to intercept and follow R-038 inbound to VOR climbing to 5000'.				
Alt Set: hPa	Rwy Elev: 71 hPa	Trans level: FL 150	Trans alt: 13000'	



Gnd speed-Kts	70	90	100	120	140	160		DAM on 116.0 R-020
Descent Angle 3.00°	372	478	531	637	743	849		
MAP at MDA								

STRAIGHT-IN LANDING RWY 05L	
MDA(H) 2500' (498')	ALS out

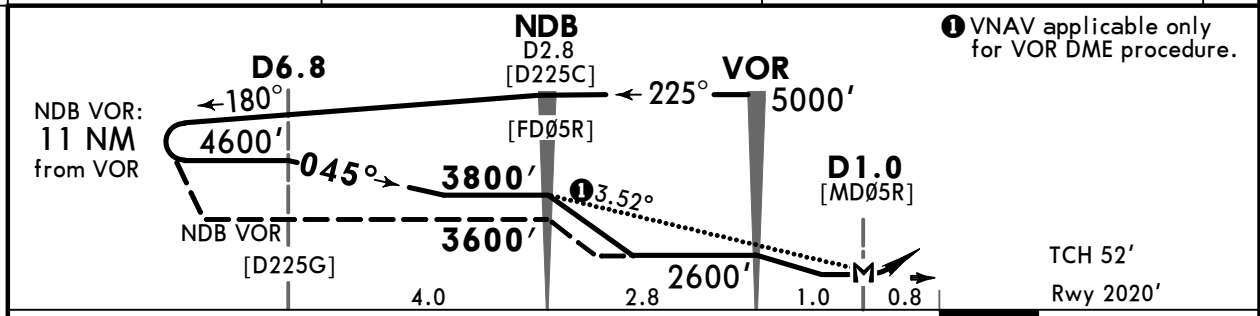
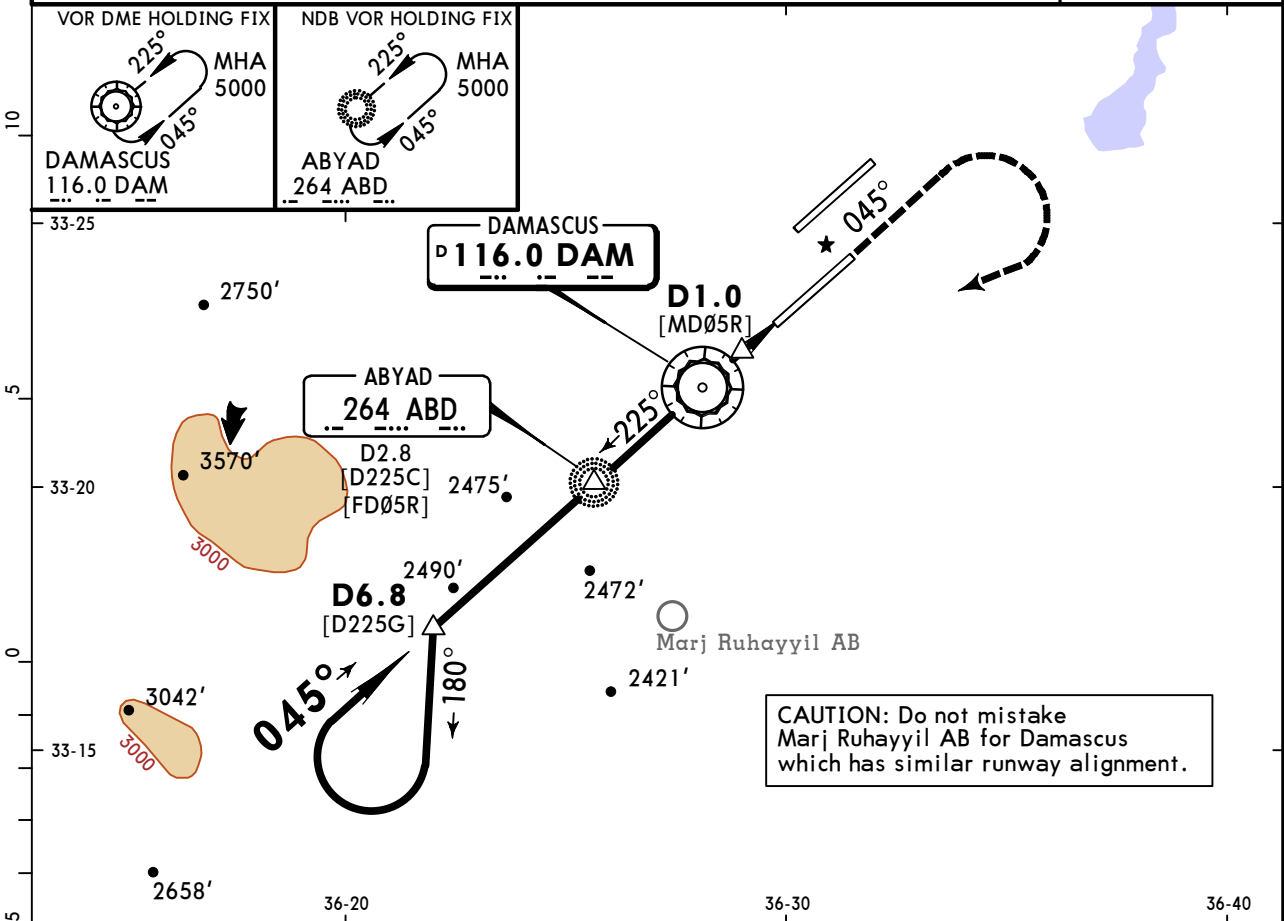
PANS OPS	A	RVR 1500m	
	B	VIS 1600m	
	C	RVR 1800m VIS 2000m	
	D	2400m	

OSDI/DAM DAMASCUS INTL

JEPPesen
19 JUL 19 **(13-2)**

DAMASCUS, SYRIA VOR DME or NDB VOR Rwy 05R

ATIS 128.225	DAMASCUS Control (APP) 120.0	DAMASCUS Radar 121.3	DAMASCUS Tower 118.5	Ground 121.9
VOR DAM 116.0	Final Apch Crs 045°	Minimum Alt Refer to profile	MDA(H) 2400' (380')	Appt Elev 2020' Rwy 2020'
MISSED APCH: Climb on R-045, then climbing turn RIGHT to 5000' and return to VOR. Contact ATC.				
Alt Set: hPa	Rwy Elev: 72 hPa	Trans level: FL 150	Trans alt: 13000'	MSA DAM VOR



Gnd speed-Kts	70	90	100	120	140	160	HIALS-II PAPI	DAM on 116.0 R-045
Descent Angle 3.52°	436	561	623	748	872	997		

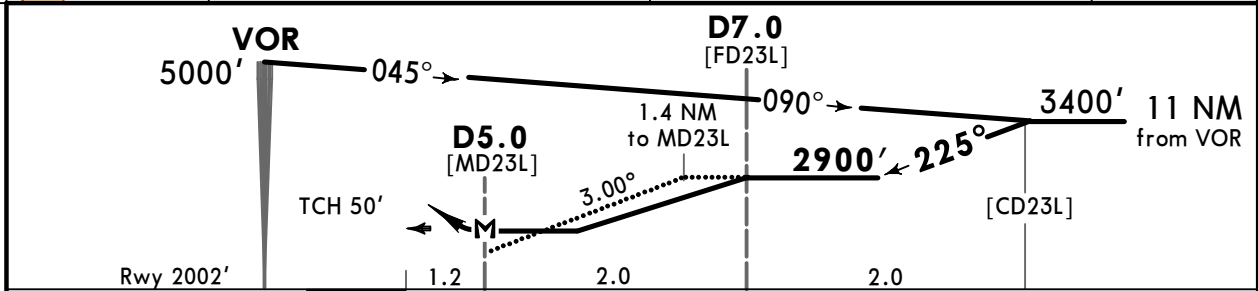
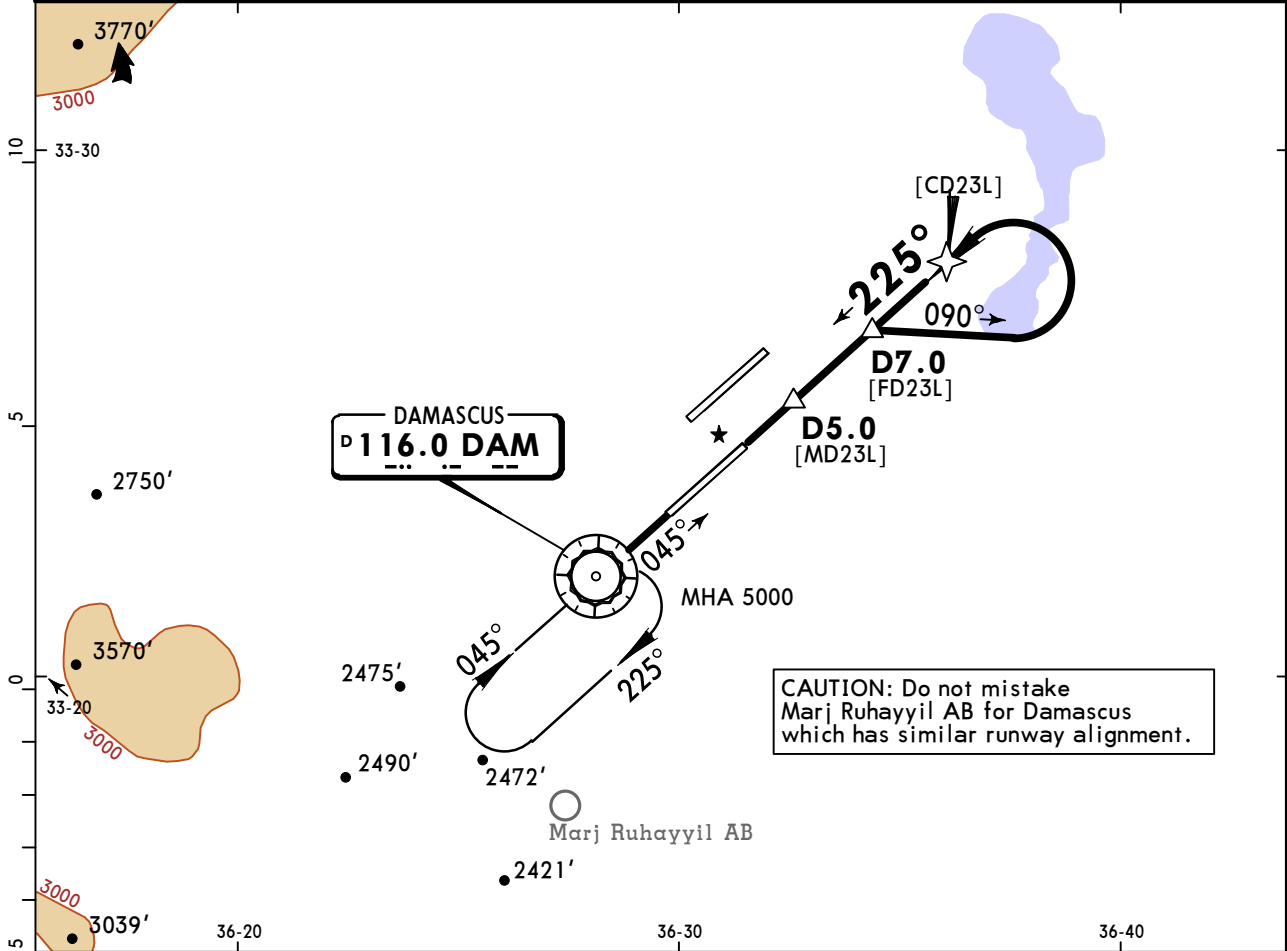
STRAIGHT-IN LANDING RWY 05R MDA(H) 2400' (380')		ALS out
A		
B	1200m	RVR 1500m VIS 1600m
C		
D		RVR 1800m VIS 2000m

OSDI/DAM
DAMASCUS INTL

JEPPESEN
19 JUL 19 **(13-3)**

DAMASCUS, SYRIA
VOR DME Rwy 23L

ATIS 128.225	DAMASCUS Control (APP) 120.0	DAMASCUS Radar 121.3	DAMASCUS Tower 118.5	Ground 121.9
VOR DAM 116.0	Final Apch Crs 225°	Minimum Alt D7.0 2900' (898')	MDA(H) 2500' (498')	Apt Elev 2020' Rwy 2002'
MISSED APCH: Proceed to VOR climbing to 5000' and contact ATC.				
Alt Set: hPa	Rwy Elev: 71 hPa	Trans level: FL 150	Trans alt: 13000'	



Gnd speed-Kts	70	90	100	120	140	160		DAM 116.0	5000'
Descent Angle	3.00°	372	478	531	637	743		↑	↑
MAP at D5.0									

STRAIGHT-IN LANDING RWY 23L	
MDA(H) 2500' (498')	ALS out

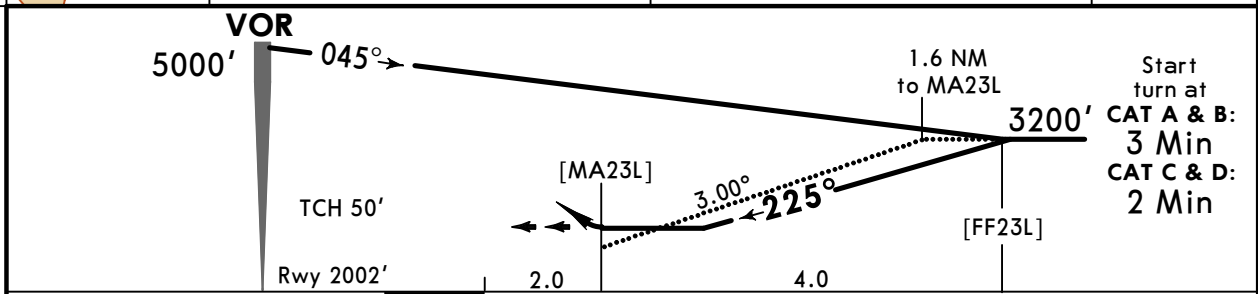
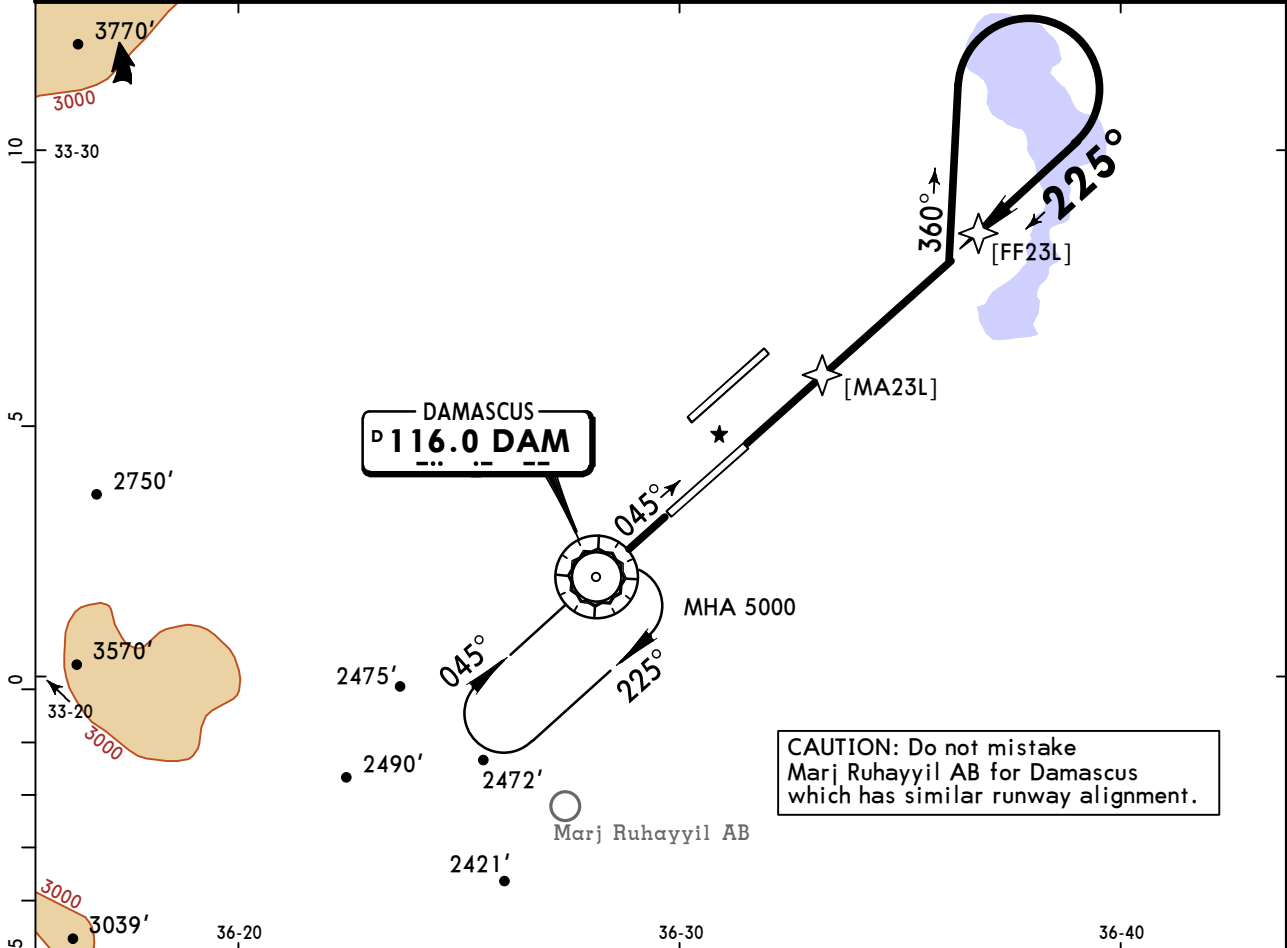
PANS OPS	A		
	B	2200m	
	C		
	D	2400m	

OSDI/DAM
DAMASCUS INTL

JEPPESEN
19 JUL 19 **(13-4)**

DAMASCUS, SYRIA
VOR Rwy 23L

ATIS 128.225	DAMASCUS Control (APP) 120.0	DAMASCUS Radar 121.3	DAMASCUS Tower 118.5	Ground 121.9
VOR DAM 116.0	Final Apch Crs 225°	No FAF	MDA(H) 2700' (698')	Apt Elev 2020' Rwy 2002'
MISSED APCH: Proceed to VOR climbing to 5000' and contact ATC.				
Alt Set: hPa	Rwy Elev: 71 hPa	Trans level: FL 150	Trans alt: 13000'	



Gnd speed-Kts	70	90	100	120	140	160		DAM 116.0	5000'
Descent Angle	3.00°	372	478	531	637	743		849	↑
MAP at MDA									

STRAIGHT-IN LANDING RWY 23L	
MDA(H) 2700' (698')	
ALS out	
A	1200m
B	RVR 1500m VIS 1600m
C	3200m
D	3600m

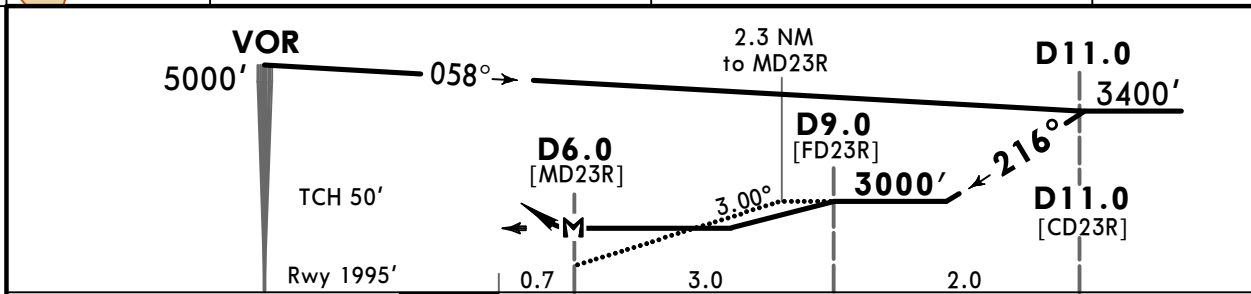
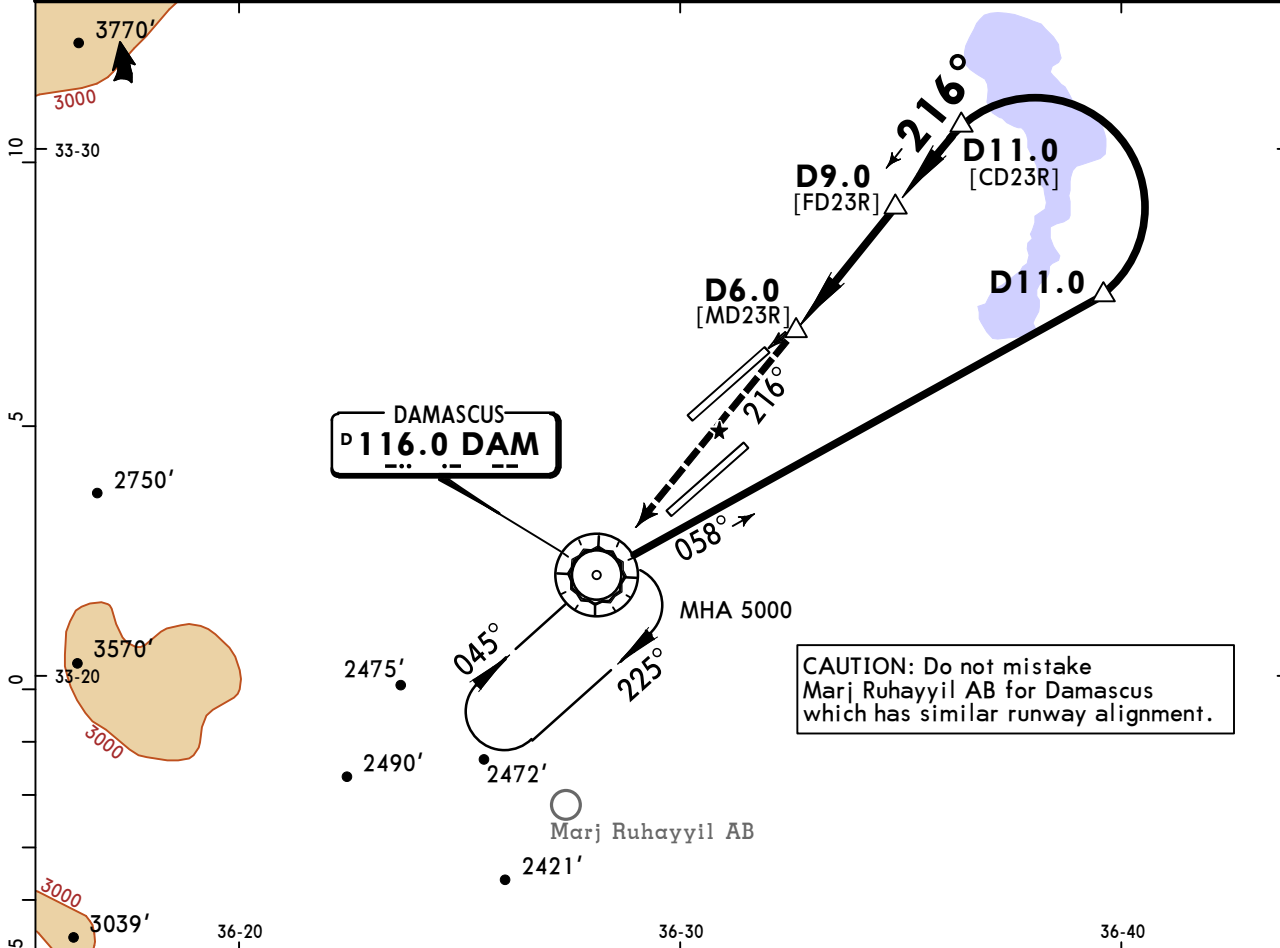
PANS OPS

OSDI/DAM
DAMASCUS INTL

JEPPESEN
19 JUL 19 **(13-5)**

DAMASCUS, SYRIA
VOR DME Rwy 23R

ATIS 128.225	DAMASCUS Control (APP) 120.0	DAMASCUS Radar 121.3	DAMASCUS Tower 118.5	Ground 121.9
VOR DAM 116.0	Final Apch Crs 216°	Minimum Alt D9.0 3000' (1005')	MDA(H) 2500' (505')	Apt Elev 2020' Rwy 1995'
MISSED APCH: Proceed to VOR on R-036 climbing to 5000' and contact ATC.				
Alt Set: hPa	Rwy Elev: 71 hPa	Trans level: FL 150	Trans alt: 13000'	
Procedure based on MAX 264 KT.				



Gnd speed-Kts	70	90	100	120	140	160	HIALS-II PAPI 	DAM 116.0	5000' ↑
Descent Angle	3.00°	372	478	531	637	743		R-036	
MAP at D6.0									

STRAIGHT-IN LANDING RWY 23R		ALS out	
MDA(H) 2500' (505')			
A	RVR 720m VIS 800m	RVR 1500m VIS 1600m	
B			
C	RVR 1500m VIS 1600m	2400m	
D			

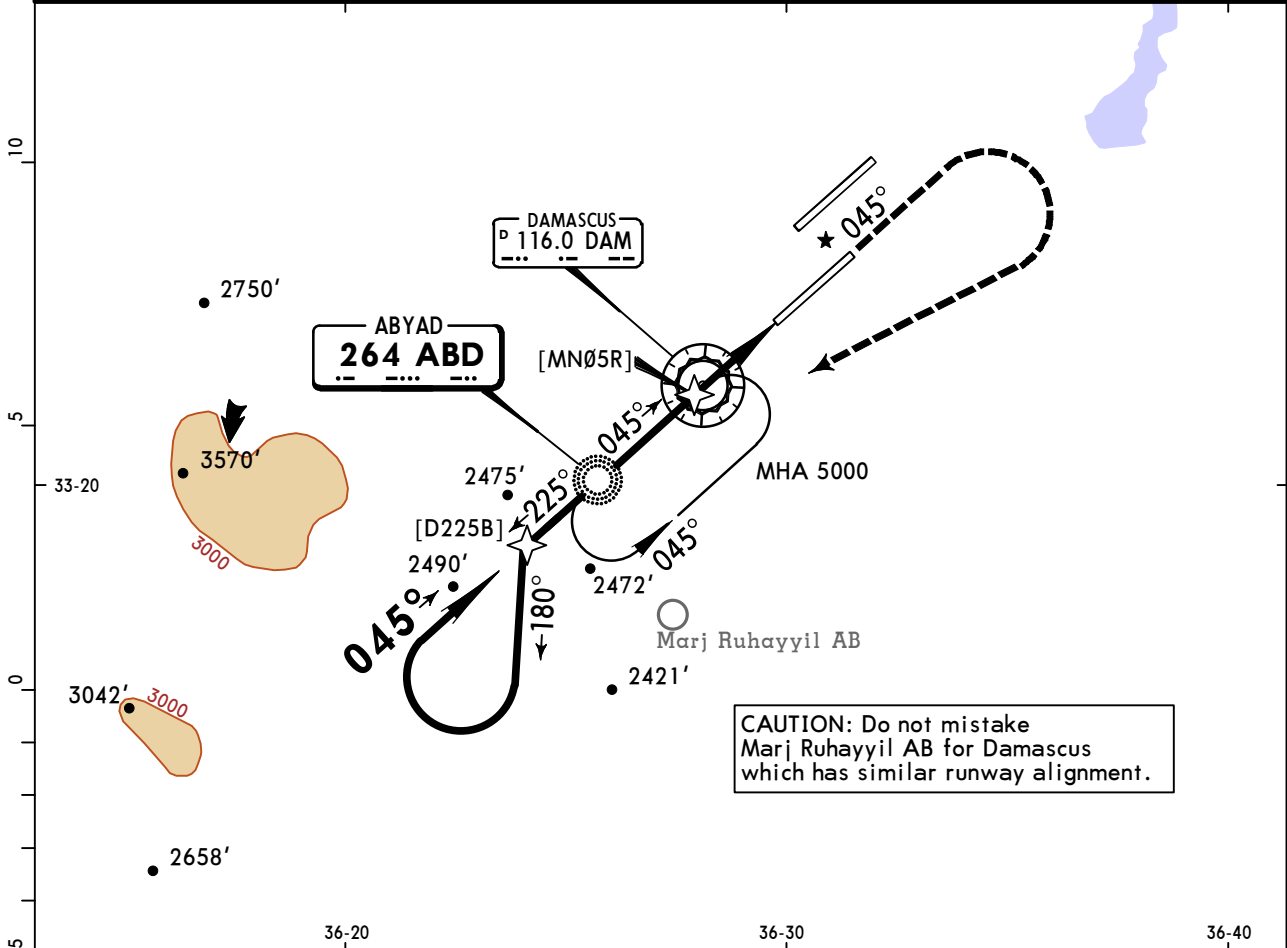
PANS OPS

OSDI/DAM
DAMASCUS INTL

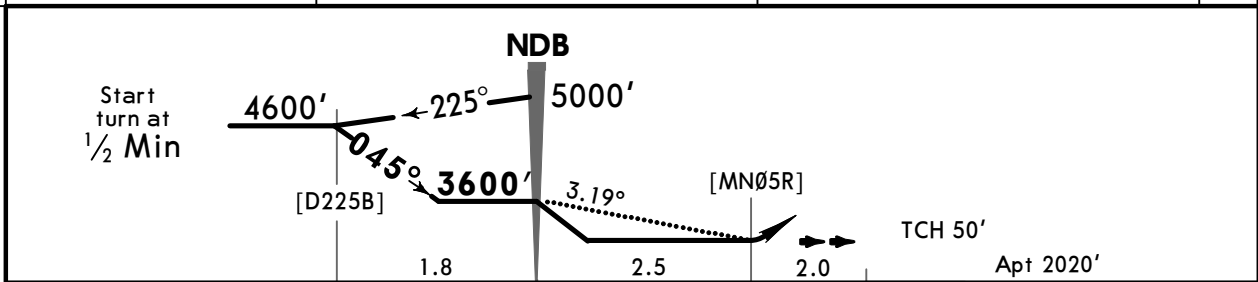
JEPPESEN
19 JUL 19 **(16-1)**

DAMASCUS, SYRIA
NDB Rwy 05R

BRIEFING STRIP™	ATIS	DAMASCUS Control (APP)	DAMASCUS Radar	DAMASCUS Tower	Ground
	128.225	120.0	121.3	118.5	121.9
	NDB ABD 264	Final Apch Crs 045°	Minimum Alt NDB 3600' (1580')	MDA(H) 2700' (680')	Apt Elev 2020'
MISSED APCH: Climb on 045°, then climbing turn RIGHT to 5000' and return to NDB. Contact ATC.					
Alt Set: hPa		Apt Elev: 72 hPa	Trans level: FL 150	Trans alt: 13000'	MSA ABD NDB



CAUTION: Do not mistake Marj Ruhayyil AB for Damascus which has similar runway alignment.



Gnd speed-Kts	70	90	100	120	140	160	HIALS-II PAPI	045° ↑	5000' ↻ RT	ABD 264
Descent Angle	3.19°	395	508	564	677	790				
MAP at MDA										

STRAIGHT-IN LANDING RWY 05R	
MDA(H) 2700' (680')	
ALS out	
A	1200m
B	3200m
C	3600m
D	
RVR 1500m VIS 1600m	

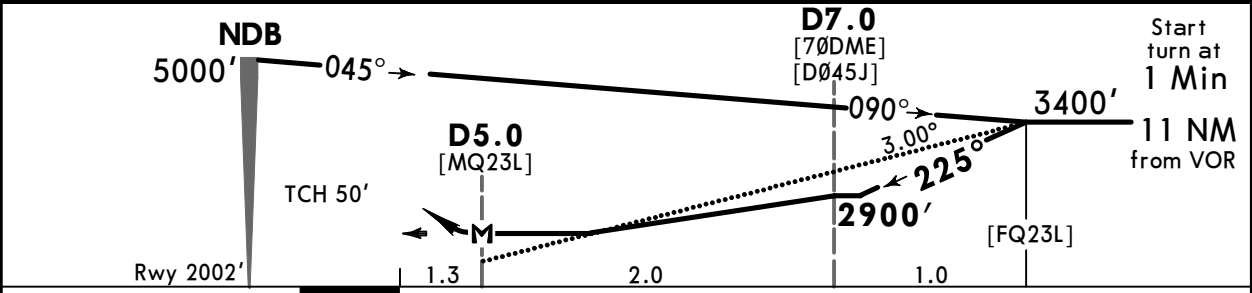
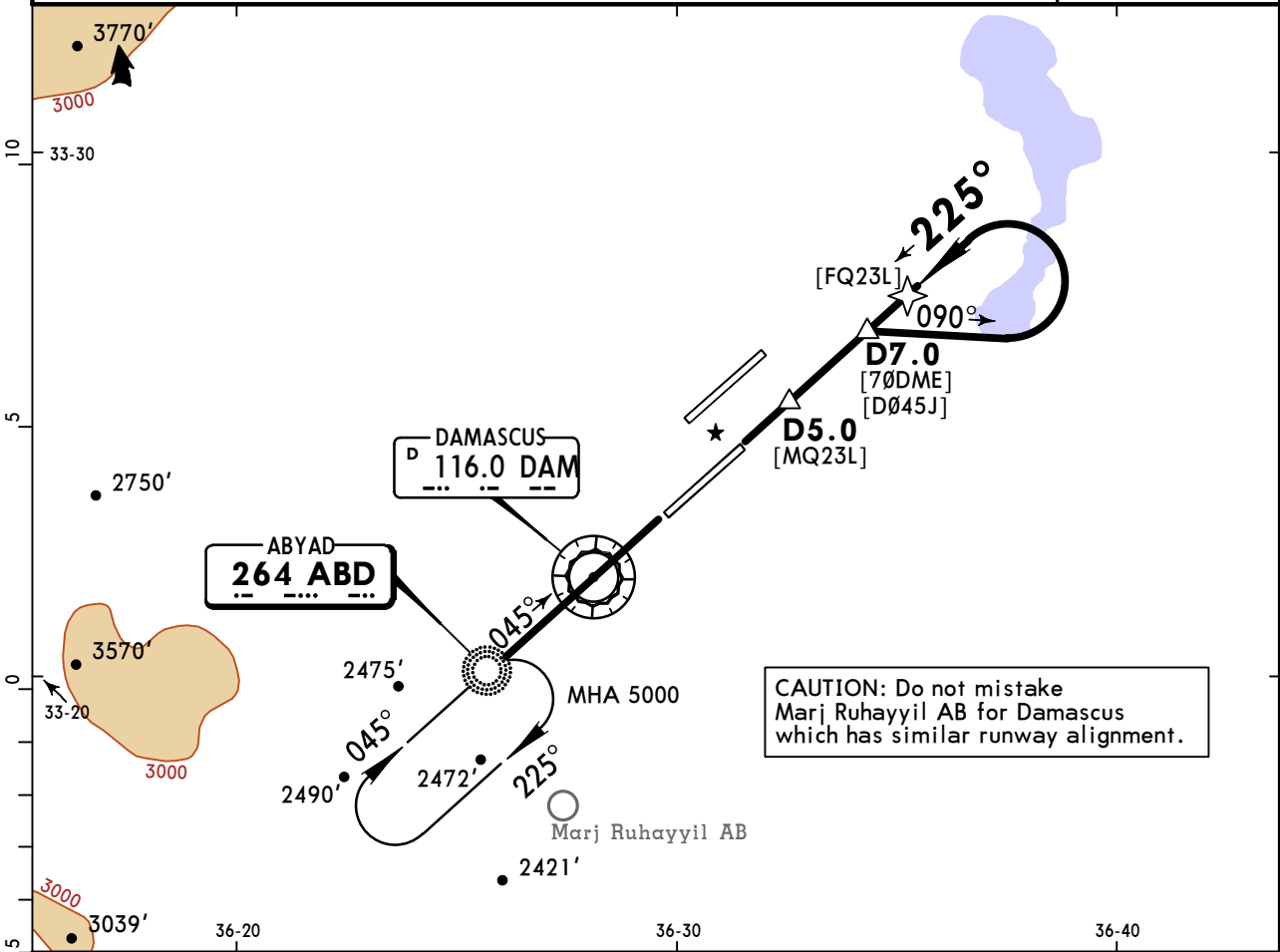
PANS OPS

OSDI/DAM DAMASCUS INTL

JEPPESEN
19 JUL 19 **(16-2)**

DAMASCUS, SYRIA NDB DME Rwy 23L

ATIS 128.225	DAMASCUS Control (APP) 120.0	DAMASCUS Radar 121.3	DAMASCUS Tower 118.5	Ground 121.9
NDB ABD 264	Final Apch Crs 225°	Minimum Alt D7.0 2900' (898')	MDA(H) 2700' (698')	Apt Elev 2020' Rwy 2002'
MISSED APCH: Proceed to NDB climbing to 5000' and contact ATC.				
Alt Set: hPa	Rwy Elev: 71 hPa	Trans level: FL 150	Trans alt: 13000'	



Gnd Speed-Kts	70	90	100	120	140	160	HIALS PAPI ABD 264 5000'
Descent Angle	3.00°	372	478	531	637	743	
MAP at D5.0							

STRAIGHT-IN LANDING RWY 23L	
MDA(H) 2700' (698')	
ALS out	

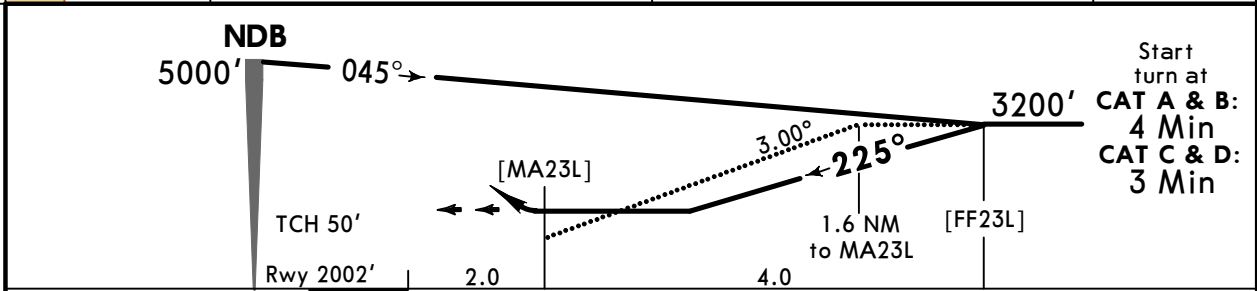
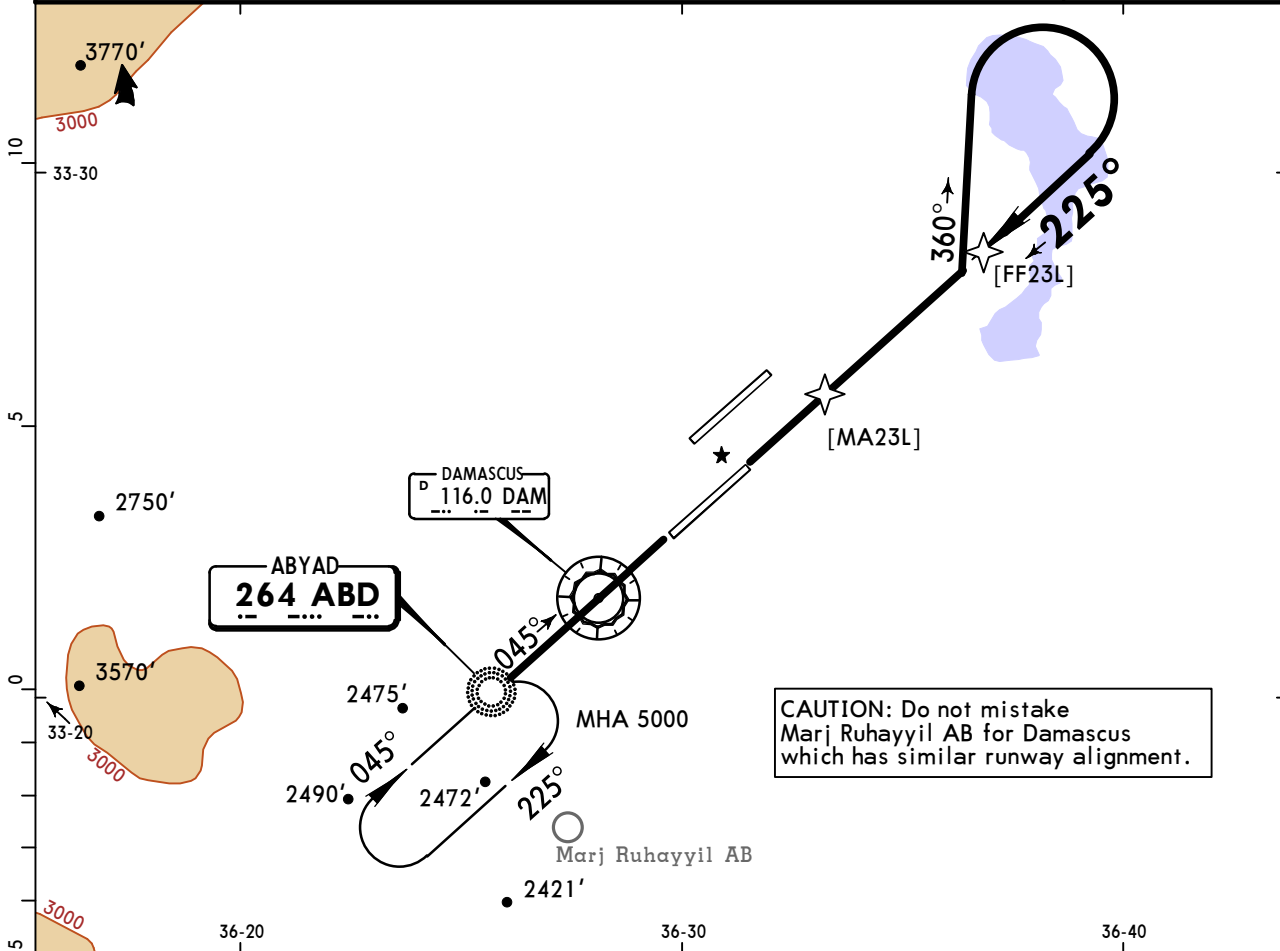
PANS OPS	A	
	B	2400m
	C	3200m
	D	3600m

OSDI/DAM
DAMASCUS INTL

JEPPESEN
19 JUL 19 **(16-3)**

DAMASCUS, SYRIA
NDB Rwy 23L

ATIS 128.225	DAMASCUS Control (APP) 120.0	DAMASCUS Radar 121.3	DAMASCUS Tower 118.5	Ground 121.9
NDB ABD 264	Final Apch Crs 225°	No FAF	MDA(H) 2700' (698')	Apt Elev 2020' Rwy 2002'
MISSED APCH: Proceed to NDB climbing to 5000' and contact ATC.				
Alt Set: hPa	Rwy Elev: 71 hPa	Trans level: FL 150	Trans alt: 13000'	



Gnd speed-Kts	70	90	100	120	140	160		ABD 264	5000'
Descent Angle	3.00°	372	478	531	637	743		849	↑
MAP at MDA									

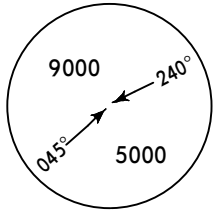
STRAIGHT-IN LANDING RWY 23L		MDA(H) 2700' (698')	
		ALS out	
A	1200m	RVR 1500m	
B		VIS 1600m	
C	3200m		
D	3600m		

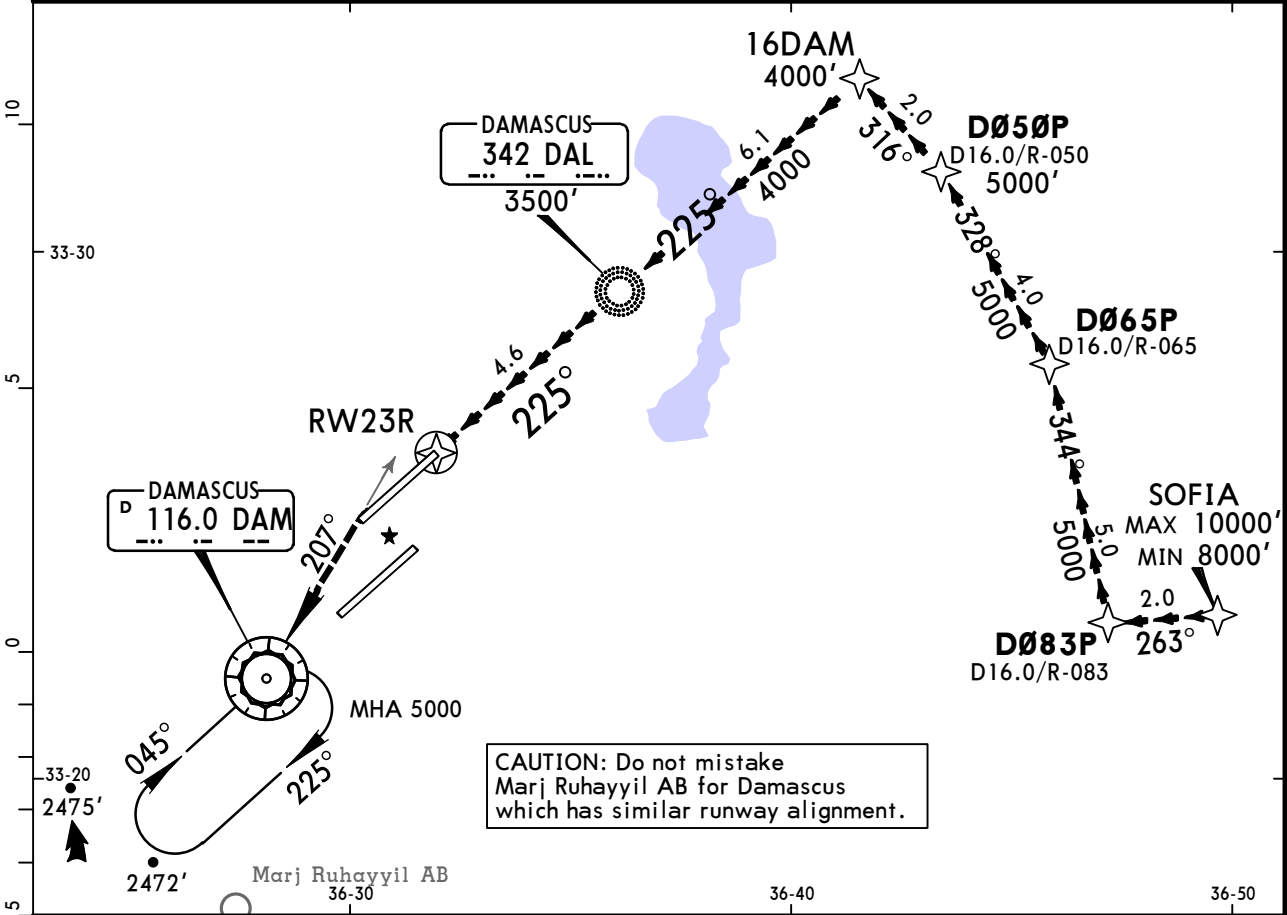
PANS OPS

OSDI/DAM
DAMASCUS INTL

JEPPESEN
19 JUL 19 (19-10)

DAMASCUS, SYRIA
RNAV VISUAL Rwy 23R

ATIS 128.225		DAMASCUS Control (APP) 120.0	DAMASCUS Radar 121.3	DAMASCUS Tower 118.5	Ground 121.9
NAVAIDS-Refer to Planview	Final Apch Crs 225°	No FAF	No MDA(H) published	Apt Elev 2020'	 MSA DAM VOR
MISSED APCH: Climb on 225°, intercept R-027 inbound VOR climbing to 5000'.					
Alt Set: hPa	Apt Elev: 72 hPa	Trans level: FL 150	Trans alt: 13000'		
GNSS required. RNP 0.3 required.					



Route description

SOFIA DØ83P DØ65P DØ5ØP 16DAM DAL NDB RW23R

Descent point for 3.00° continuous descent approach to RWY 23R is approximately at 6.1 NM from RW23R.

Conditions

- Select RNAV VISUAL Rwy 23R from Nav Database.
- Pilots request "Visual approach 23R".
- Pilots must acquire/maintain visual reference to terrain not later than waypoint 16DAM.
- At DAL NDB latest, report "RWY in sight".

					HIALS-II PAPI	225° ↑	5000' LT	DAM onto R-027
--	--	--	--	--	------------------	-----------	-------------	----------------------

PANS OPS

MINIMUMS NOT PUBLISHED

Chart changes since cycle 17-2019

ADD = added chart, REV = revised chart, DEL = deleted chart.

ACT	PROCEDURE IDENT	INDEX	REV DATE	EFF DATE
-----	-----------------	-------	----------	----------

DAMASCUS, (DAMASCUS INTL - OSDI)

TERMINAL CHART CHANGE NOTICES

Chart Change Notices for Airport OSDI

Type: Terminal

Effectivity: Temporary

Begin Date: Immediately

End Date: Until Further Notice

Holdings for approach procedures under clarification, confirm with ATC.

Type: Terminal

Effectivity: Temporary

Begin Date: Immediately

End Date: Until Further Notice

(11-4/11-4A, 16-1) NDB ILS 1 Rwy 23R and NDB Rwy 05R timing for reversal procedures not available.